

Art.-Nr.:
1012820

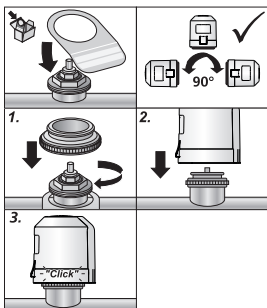
(NC)



Montage

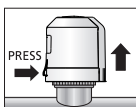


Assembly
Montage



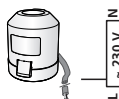
Demontage

Disassembly
Démontage



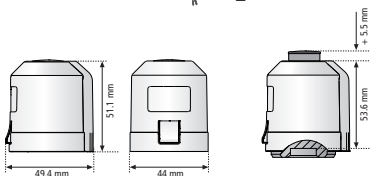
Anschluss

Connection
Raccordement



blau - blue - bleu

braun - brown - brun

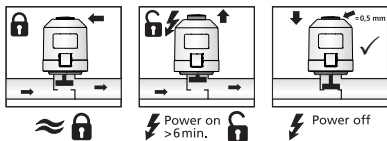


First-Open

„First-Open“-Funktion
„First-Open“ function
Fonction „First-Open“

Stromlos-zu
Normally Closed

NC



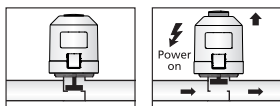
Stromlos-zu
Normally Closed

NC

Anpassungskontrolle
Adaption check
Contrôle de l'ajustement



Funktionsweise
Function mode
Mode de fonctionnement



DEU

Technische Daten

| | |
|-----------------------|---------------------------------|
| Betriebsspannung: | 230 V, +10 %...- 10 %, 50/60 Hz |
| Betriebsleistung: | 2,5 W |
| Einschaltstrom, max.: | 300 mA für max. 200 ms |
| Stellkraft: | 90 N \pm 5 % |
| Stellweg: | 4,0 mm |
| Schutzgrad: | IP 42 |
| Umgebungstemperatur: | 0 °C ... 60 °C |
| Lagertemperatur: | -25 °C ... 60 °C |

ENG

Technical Specifications

| | |
|----------------------|---------------------------------|
| Operating voltage: | 230 V, +10 %...- 10 %, 50/60 Hz |
| Operating capacity: | 2.5 W |
| Max. inrush current: | 300 mA for max. 200 ms |
| Actuating force: | 90N \pm 5 % |
| Stroke: | 4,0 mm |
| Type of protection: | IP 42 |
| Ambient temperature: | 0 °C ... 60 °C |
| Storage temperature: | -25 °C ... 60 °C |

FRA

Spécifications techniques:

| | |
|----------------------------------|---------------------------------|
| Tension de service: | 230 V, +10 %...- 10 %, 50/60 Hz |
| Capacité de fonctionnement: | 2,5 W |
| Courant de fermeture du circuit: | 300 mA pendant max. 200 ms |
| Force: | 90 N \pm 5 % |
| Course: | 4,0 mm |
| Type de protection: | IP 42 |
| Température ambiante: | 0 °C ... 60 °C |
| Température de stockage: | -25 °C ... 60 °C |

101282080

OVENTROP GmbH & Co. KG
Paul-Oventrop-Straße 1
D-59939 Olsberg
Telefon +49 (0) 29 62 82-0
Telefax +49 (0) 29 62 82-400
E-Mail mail@oventrop.de
Internet www.oventrop.com



130970.1451