

#### Tender specification:

Oventrop safety devices with safety valve 6 bar / 10 bar for “Regusol” stations.

#### Application:

The safety devices are used for the protection of the solar circuit in thermal solar installations and allow for the connection of an expansion tank (except for the “Regusol” safety block). The safety valve must be connected to a discharge pipe.

- The safety group “Regusol SG” is always installed in the solar return between the “Regusol” station and the collector.
- The safety block “Regusol SB” is installed between the storage cylinder and the “Regusol” station if the permissible excess pressure in the pipework might be exceeded due to hot water returning from the storage cylinder.

#### Technical data:

Max. operating temperature: 120 °C

Max. operating pressure: PN 10 (20 °C)

Safety valve: 6 bar  
10 bar (only item no. 1364247)

Pressure gauge: 0-10 bar  
(except for safety block “Regusol SB”, item no. 1364140 - without pressure gauge)

#### Models:

“Regusol SB” Safety block  
with safety valve 6 bar (without pressure gauge) 1364140  
both ports G 1 for “Regusol” compression fittings

“Regusol SG” Safety group  
manufactured up to 2015  
with safety valve 6 bar 1364197  
with safety valve 10 bar 1364247  
manufactured since 2015  
with safety valve 6 bar 1364192  
female thread G 1 with contour for the connection to the “Regusol” station  
connection expansion tank G  $\frac{3}{4}$  – flat sealing  
connection filling and flushing connection G  $\frac{3}{4}$  – flat sealing

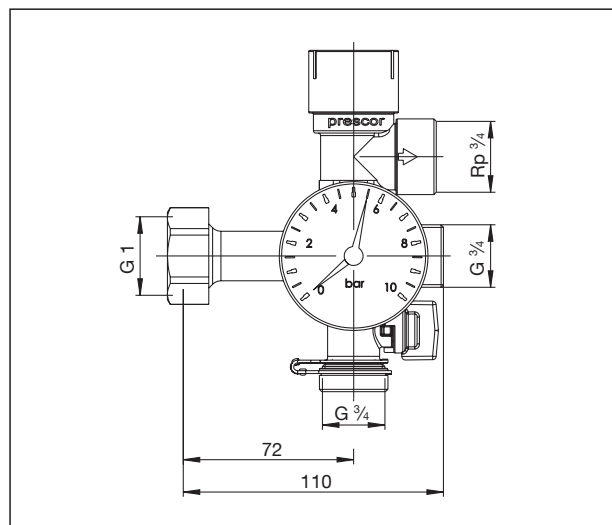
Safety group Solar - straight pattern  
with safety valve 6 bar 1364248  
both ports G 1 for “Regusol” compression fittings  
connection expansion tank G  $\frac{3}{4}$  - flat sealing

#### Note:

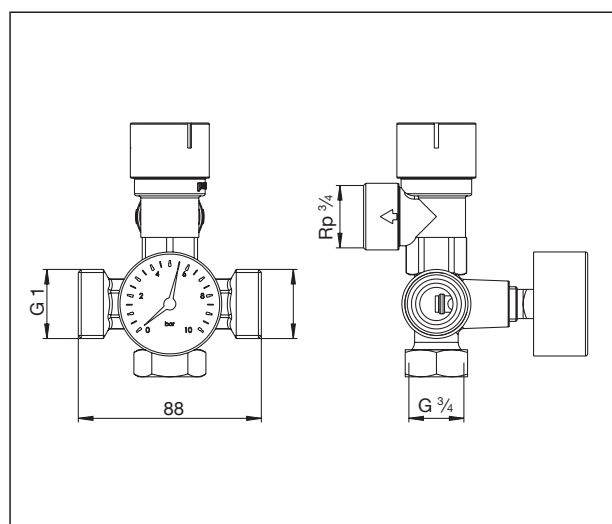
“Regusol” compression fitting sets are available as accessories and have to be ordered separately. When using the compression fittings with soft and thin walled pipes, it is necessary to use reinforcing sleeves for the additional stabilisation of the pipe.

Subject to technical modifications without notice.

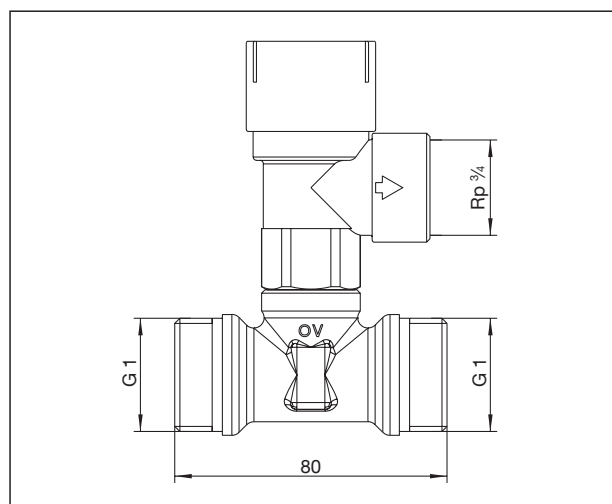
Product range 9  
ti 244-EN/10/MW  
Edition 2017



Dimensions safety group “Regusol SG”



Dimensions safety group Solar - straight pattern



Dimensions safety block “Regusol SB”