

#### Tender specification:

Oventrop bronze piston type spring assisted check valve PN 25, both ports female thread according to EN 10226 or DIN ISO 228. Body made of bronze, inner parts made of brass, valve disc with EPDM seal, stem seal with O-ring made of EPDM. Materials suitable for potable water.

#### Technical data:

Max. operating pressure  $p_s$ : 25 bar (PN 25)

Operating temperature  $t_s$ : -10 °C up to +150 °C

#### Application:

The Oventrop piston type spring assisted check valve is suitable for horizontal or vertical installation in the pipework. The valve disc is spring assisted with an opening pressure of 40 mbar (~ 400 mm WG).

The piston type spring assisted check valve is not suitable for use on pulsating flow and must be installed with a minimum of 10 D (10 x nominal pipe diameter) of straight pipe behind the pump.

#### Application:

Central heating and cooling systems with closed circuits, for operation with non-aggressive, harmless fluids (e.g. water or suitable water and glycol mixtures according to VDI 2035/ÖNORM 5195), as well as systems with open circuits which are operated with water.

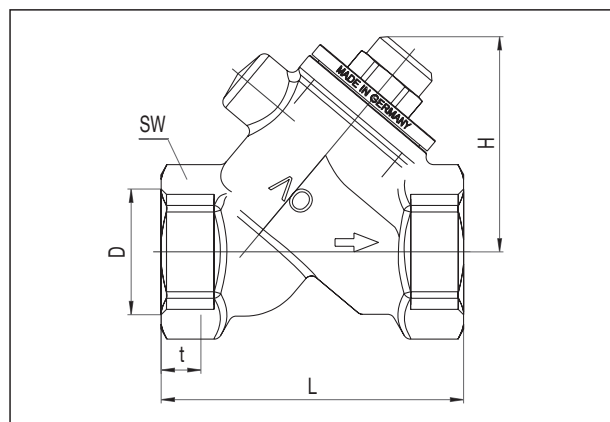
Copper pipes (according to DIN EN 1057) can be connected to the DN 15 and DN 20 female thread with suitable "Ofix" compression fittings (use reinforcing sleeves!).

#### Size:

	$k_{VS}$
DN 10	3.4
DN 15	5.5
DN 20	10.3
DN 25	17.5
DN 32	33.0
DN 40	44.0
DN 50	68.0

#### Item no.:

1072103
1072104
1072106
1072108
1072110
1072112
1072116

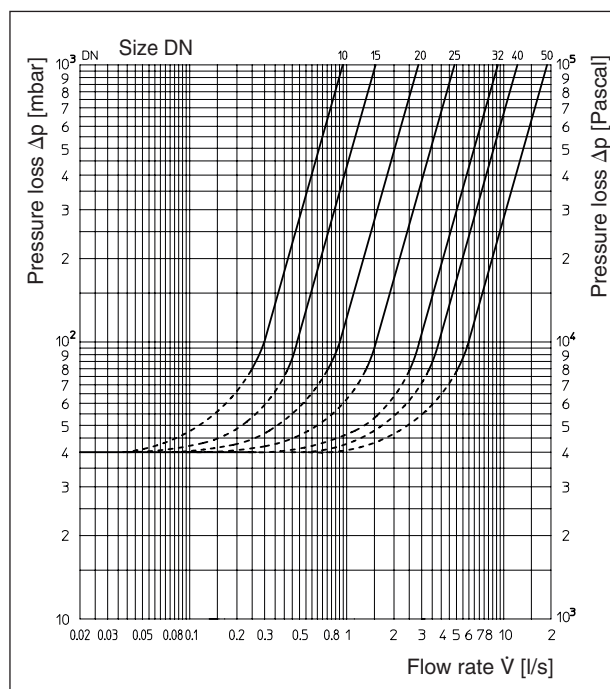


DN	D*	L	H	t	SW**
10	Rp 3/8	63.5	41	10.1	22
15	Rp 1/2	66	41	13.2	27
20	Rp 3/4	75	44	14.5	32
25	G 1	80	57	10.5	41
32	G 1 1/4	97	67	12.5	50
40	G 1 1/2	107	80	14.5	55
50	G 2	124	90	16.5	68

#### Dimensions

\* Rp according to EN 10226, G according to ISO 228

\*\* SW = Spanner size



Flow chart

Subject to technical modifications without notice.

Product range 5  
ti 266-EN/10/MW  
Edition 2018