

Application:

Pipe fittings for central heating and cooling systems as well as systems prone to overheating (e.g. in combination with solar plants or solid fuel boilers).

Function:

The ball valve is opened/closed by turning the handle by 90°. The position of the ball is indicated by the position of the handle.

Description:

One-piece body, brass, nickel plated, reduced flow, plastic handle, stem with double O-ring seal, both ports female thread according to EN 10226 or press connection.

Application: Heating and cooling water

Attention: Prevent formation of ice as it can destroy the pipework and valve.

Technical data:

Max. operating pressure p_s : 16 bar (PN 16)
Operating temperature t_s : -10 °C up to +150 °C,
for short periods max. 180 °C,
with press connection max.
120 °C, for short periods max.
150 °C.

| DN | Ball valve with female thread | D | Ball valve with press connection | d |
|----|-------------------------------|----------|----------------------------------|----|
| 20 | 1078706 | Rp 3/4 | 1078760 | 22 |
| 25 | 1078708 | Rp 1 | 1078761 | 28 |
| 32 | 1078710 | Rp 1 1/4 | 1078762 | 35 |

Press connection:

For the direct connection of copper pipe according to EN 1057 and stainless steel pipe “NiroSan”.

Pressing must be carried out to tighten the connection.

Only use press jaws with the original contours SANHA (SA), Geberit-Mapress (MM) or Viega (Profipress) in corresponding size.

| DN | D EN 10226 | d | L | L ₁ | e | A | H | SW* | k _v |
|----|---------------|----|----|----------------|----|----|----|-----|----------------|
| 20 | Rp 3/4 | 22 | 66 | 121 | 24 | 60 | 69 | 32 | 9.5 |
| 25 | Rp 1 | 28 | 83 | 144 | 27 | 80 | 77 | 41 | 17 |
| 32 | Rp 1 1/4 | 35 | 93 | 186 | 32 | 80 | 79 | 50 | 35 |

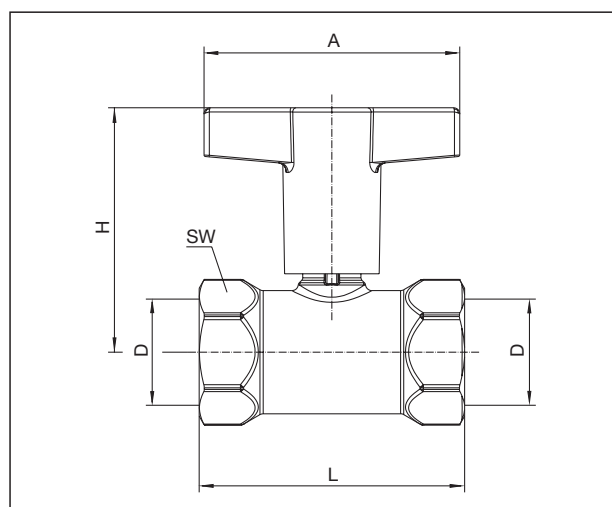
SW = Spanner size

Advantages:

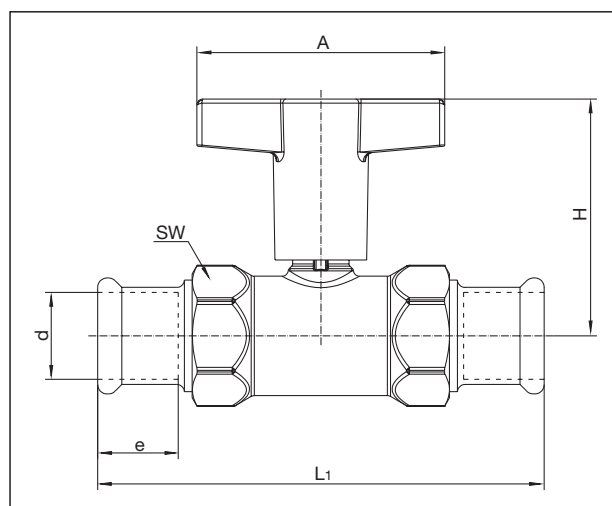
- blow-off proof stem
- one-piece, tubular body, ideal for continuous thermal insulation
- short-term operation at high temperatures
- suitable for mixtures of water and glycol (max. glycol proportion 50 %)

Subject to technical modifications without notice.

Product range 5
ti 194-EN/10/MW
Edition 2018



Dimensions item no. 1078706-10 (DN 20 up to DN 32)



Dimensions item no. 1078760-62 (Ø 22 up to Ø 35 mm)

Insulation shells:

The double insulation shells made of anthracite coloured expanded polypropylene are easy to use and can be reused.

Building material class B2 according to DIN 4102.

Thermal conductivity 0.035 W/mK.

Meets the requirements of the German Energy Saving Directive according to appendix 5, table 1, line 5.

| DN | d | D | L |
|----|-------|-----|-----|
| 20 | 3/4 | 81 | 78 |
| 25 | 1 | 94 | 95 |
| 32 | 1 1/4 | 114 | 107 |

Dimensions item no. 1078093-95 (DN 20 up to DN 32)