

Tender specification:

The Oventrop thermal drainage protection device limits the water temperature in boilers with integrated water heater or continuous-flow water heater in closed hot water heating systems for different fuels or solid fuels.

It complies with the DIN EN 14597 standard and can be used in installations according to DIN EN 12828 regarding solid fuel boilers with manual fuel supply and capacities of less than 100 kW.

The installation of the thermal drainage protection device is mandatory in systems in which the heat generator has to be equipped with a water heater.

Item no.: 1354699

Technical data:

Max. excess operating pressure: 10 bar
 Max. operating temperature: 122 °C
 Response temperature: about 95 °C
 Temperature range: 5 °C - 110 °C
 Max. ambient temperature: 0 °C - 70 °C
 Fluid: Water
 Flow capacity: 2.05 m³/h at ΔP 1 bar
 Mode of operation (EN14597): 2 KP
 PED category: IV
 Installation position: Any
 Length of capillary: 1.3 m
 Connection threads:
 - Valve: Both ports female thread Rp ¾
 - Immersion pocket: G ½
 Immersion depth below hexagon: 153 mm
 Component marking: TÜV.TH.797-13
 DIN-reg.-no.: TH 797

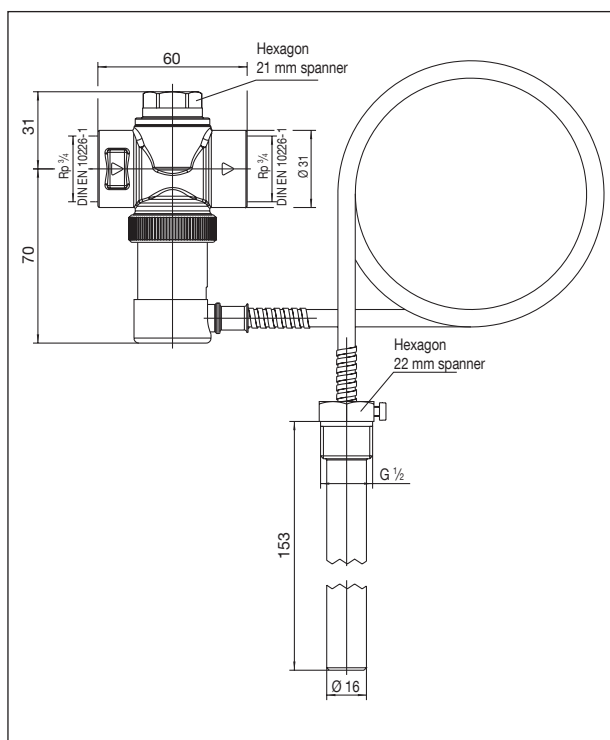
Function:

The Oventrop thermal drainage protection device is a pressure balanced single-seated valve which opens with the temperature rising. Control is carried out via two working elements which act independently of each other. The thermal drainage protection device can be vented manually.

The cold water entering the potable water heater provokes an indirect cooling of the boiler and an exceedance of the max. permissible temperature of 115 °C is avoided.



Thermal drainage protection device



Dimensions

Installation and assembly:

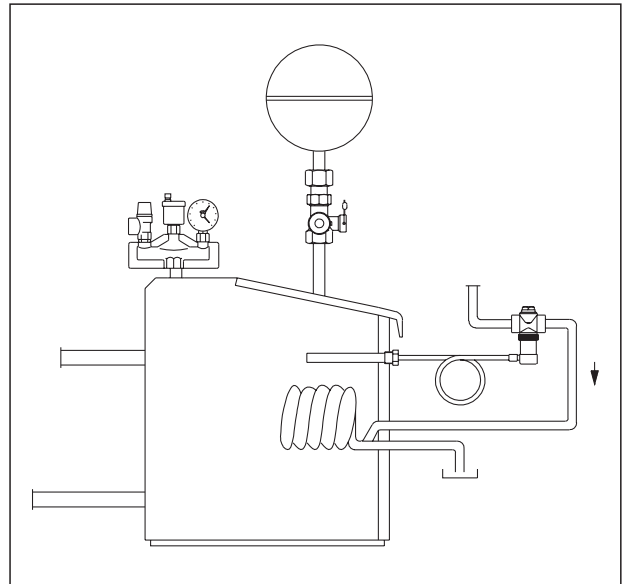
The thermal drainage protection device is preferably installed in the cold water inlet of the safety heat exchanger. The type of installation protects the device from contamination by lime precipitation or similar effects. As for boilers which are protected via the installed uncontrolled potable water heater, the device is to be installed in the hot water outlet. The size of the inlet and outlet pipe must be at least DN 20. The pipework has to be flushed thoroughly before installing the thermal drainage protection device free from tension. To guarantee a perfect operation of the system, the installation of a potable water filter is recommended. Malfunctions can be avoided by a correct positioning of the device and a careful examination of the installation surroundings. The correct location of the immersion pocket in the boiler is very important.

To facilitate installation, the upper part of the device can be removed.

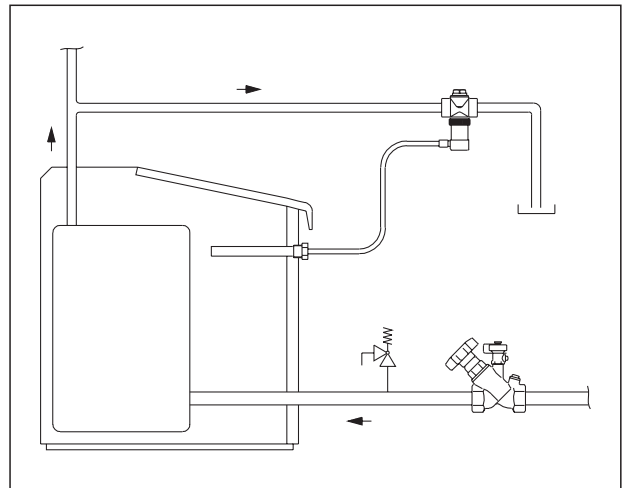
Maintenance:

Due to the configuration of its individual components, it is not necessary to remove the thermal drainage protection device for maintenance or repair.

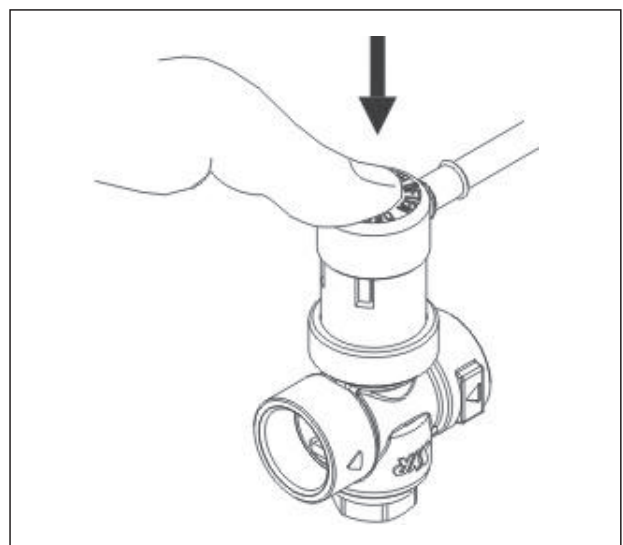
Functional control must be carried out every year. To do so, press the red button of the thermal drainage protection device. Water must escape from the outlet!



Installation in the cold water inlet of the heat exchanger



Installation in the hot water outlet of the heat exchanger



Annual functional control by pressing the red button

Subject to technical modifications without notice.

Product range 6
ti 278-EN/10/MW
Edition 2017