

Tender specification:

Automatically operating check valve for use in potable water and circulation systems. Body made of dezincification resistant brass. Insert made of plastic, spring made of stainless steel.

PN 10, $T_{max} = 95\text{ °C}$, opening pressure $\geq 10\text{ mbar}$

Inlet port: Male thread G 1, flat sealing

Outlet port: Collar nut G 1, flat sealing

Application:

The Oventrop check valve “Regumaq” automatically prevents unwanted gravity circulation in the pipework and a back-flow of potable water in potable water installations. Due to the low opening pressure of $\geq 10\text{ mbar}$, the check valve is not only suitable for installation in cold water risers but also for circulation systems where it avoids gravity circulation when the pump is switched off.

Function:

The Oventrop check valve automatically prevents unwanted gravity circulation in the pipework.

The automatic check valve closes immediately after loss of pressure of the circulation pump.

Item no.: 1381089

Technical data:

Max. operating temperature: 95 °C

Pressure rating: PN 10

Connection inlet port: Male thread G 1, flat sealing

Connection outlet port: Collar nut G 1, flat sealing

Material: Dezincification resistant brass, insert made of plastic, spring made of stainless steel

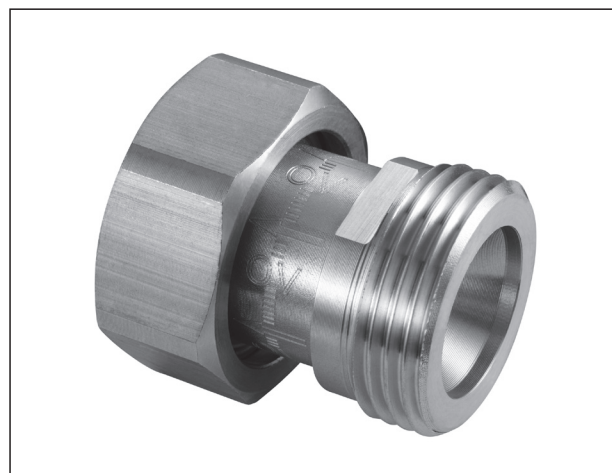
Opening pressure: $\geq 10\text{ mbar}$

Installation advice:

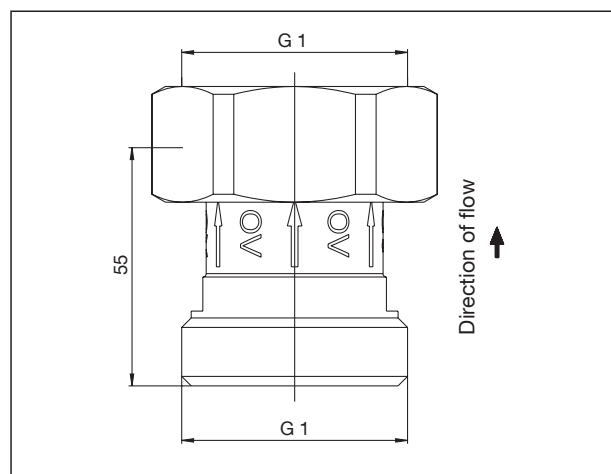
The direction of flow (arrow on the body) and the opening pressure of $\geq 10\text{ mbar}$ must be observed.

Note:

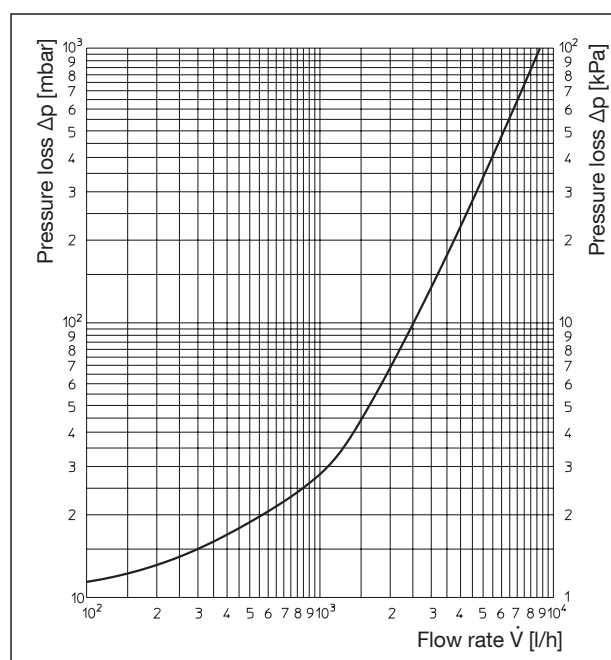
When the circulation pump is switched off, a low gravity circulation depending on the circulation pressure is still possible within the circulation system as the check valve is not tight sealing!



“Regumaq” Check valve



Dimensions



Flow chart

Subject to technical modifications without notice..

Product range 6
ti 247-EN/10/MW
Edition 2017