

Fill and drain ball valve, bronze, PN 16
with male thread, handle with stop.

Application:

The Oventrop fill and drain ball valve with hose connection is used for heating systems, boilers, radiators and pipework which have to be equipped with a filling and draining facility.

Male thread, removable handle with stop, with hose connection (soft seal) and cap,

Stem with O-ring seal.

The fill and drain ball valve with hose connection is suitable for treated heating water with a glycol proportion up to 50 %.

Function:

The fill and drain ball valve is opened/closed by turning the handle by 90°. The position of the ball is indicated by the position of the handle or stem which move parallel to it.

Technical data:

Connection: Installation with male thread,
outlet port with hose connection

Application: Water, saturated steam, heating water with
a glycol proportion up to 50 % (e.g. district
heating)

Operating
pressure p_s : 16 bar (PN 16)

Operating
temperature t_s : 0 °C up to 150 °C

Materials:

Body: CuSn5Zn5Pb2 according to DIN EN 1982

Switching ball: CuZn40Pb2, chrome plated

Stem: CuZn40Pb2

Stem seal: EPDM

Ball seats: PTFE

Hose connection: Brass

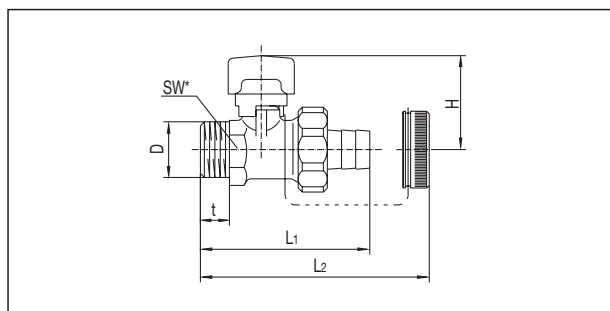
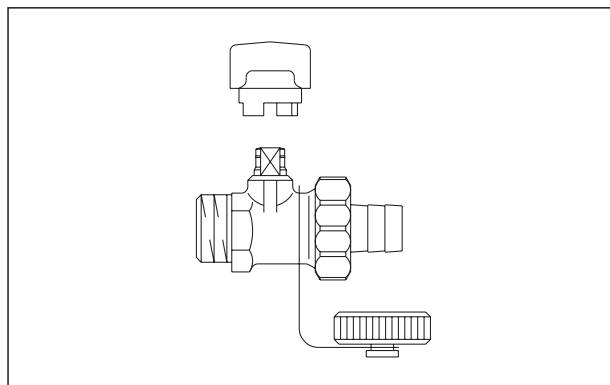
Handle: High quality plastic

Flow values (including hose connection):

DN	10	15
k_{vs}	2.0	2.0



Fill and drain ball valve with hose connection



Dimensions item no.: 1032403+04 (DN 10 and DN 15)

DN	D	L ₁	L ₂	t	SW*	H
10	G 3/8	65	50	10	24	36
15	G 1/2	66	51	11	24	36

*SW = Spanner size

Subject to technical modifications without notice.

Product range 6
ti 296-EN/10/MW
Edition 2017

