



Room and return temperature control
"Unibox T-RTL vario"
Data sheet



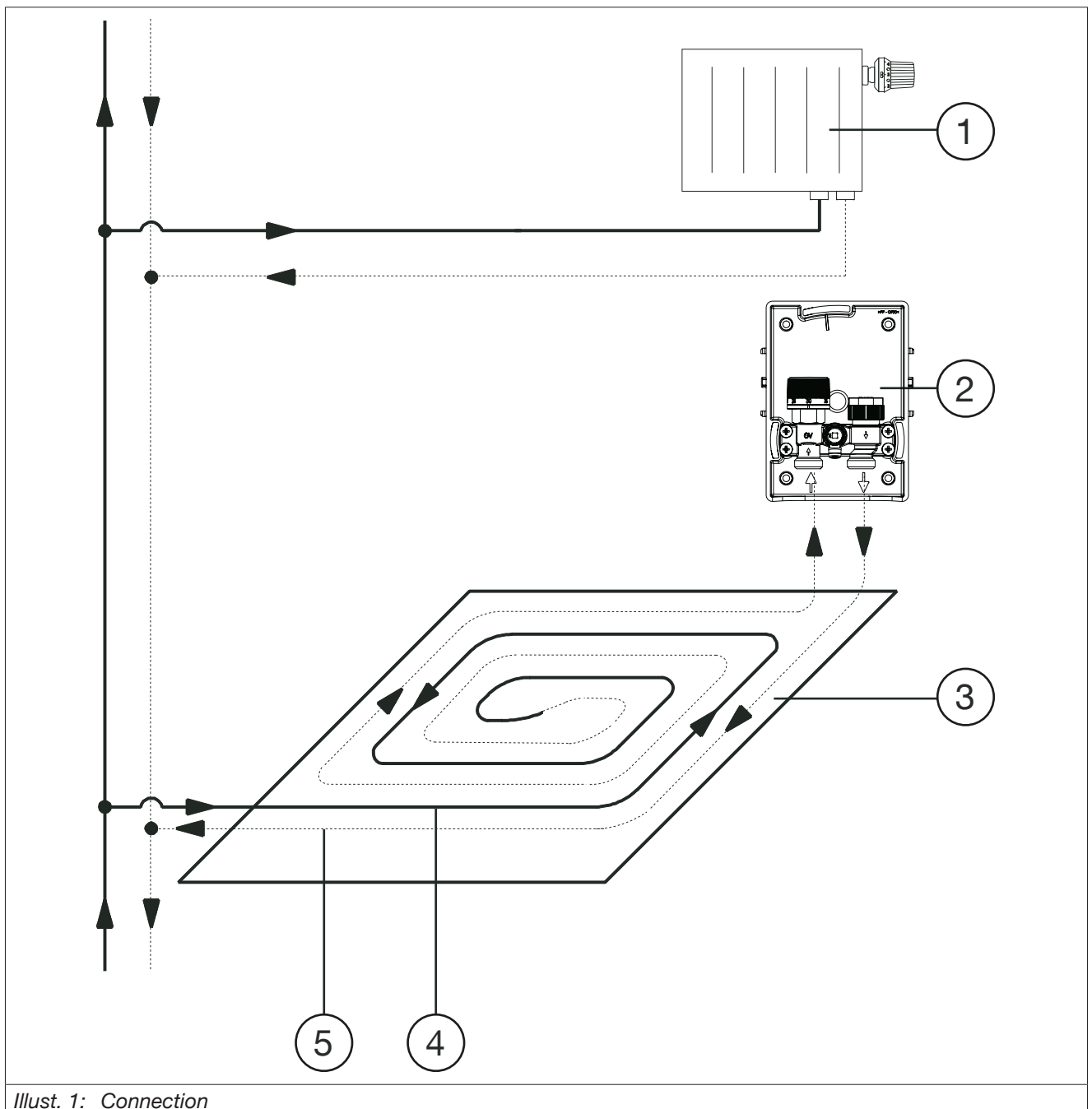
1. Functional description

The “Unibox T-RTL vario” is used for return temperature limitation in a surface temperature regulation system. Room temperature control is also possible by mounting a thermostat with remote control “Uni FH” or a room thermostat and an actuator.

The integrated thermostatic valve is equipped with a presettable valve insert and thus enables the volume flow to be accurately adapted to the required heat demand (see chart in the appendix) and hydronic balancing to be carried out.

The installation position of the “Unibox T-RTL vario” has to be chosen so that heating fluid passes first through the heating circuit and then through the valve of the “Unibox T-RTL vario”. On its way from the entry into the heating surface to the “Unibox T-RTL vario”, the heating fluid cools down. The flow rate is controlled by the sensor element being in touch with the heating fluid. The automatic thermostat controls the desired room temperature. You can modify the surface temperature by turning the handwheel of the return temperature limiter. You can set the desired room temperature by turning the handgrip of the automatic thermostat.

1.1 Connection



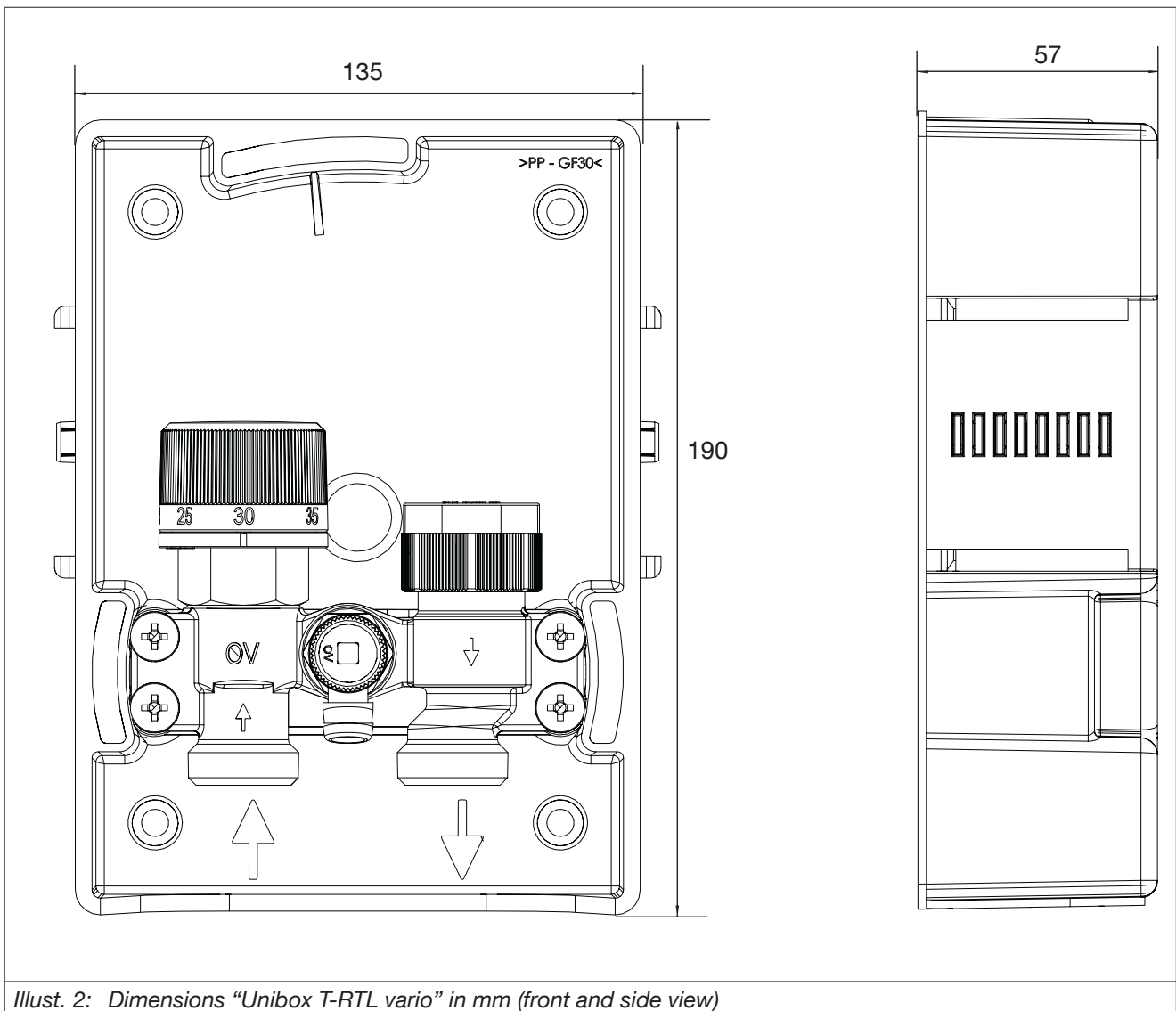
Illust. 1: Connection

(1)	Radiator
(2)	“Unibox T-RTL vario”
(3)	Surface temperature regulation circuit
(4)	Supply
(5)	Return

1.2 Technical data

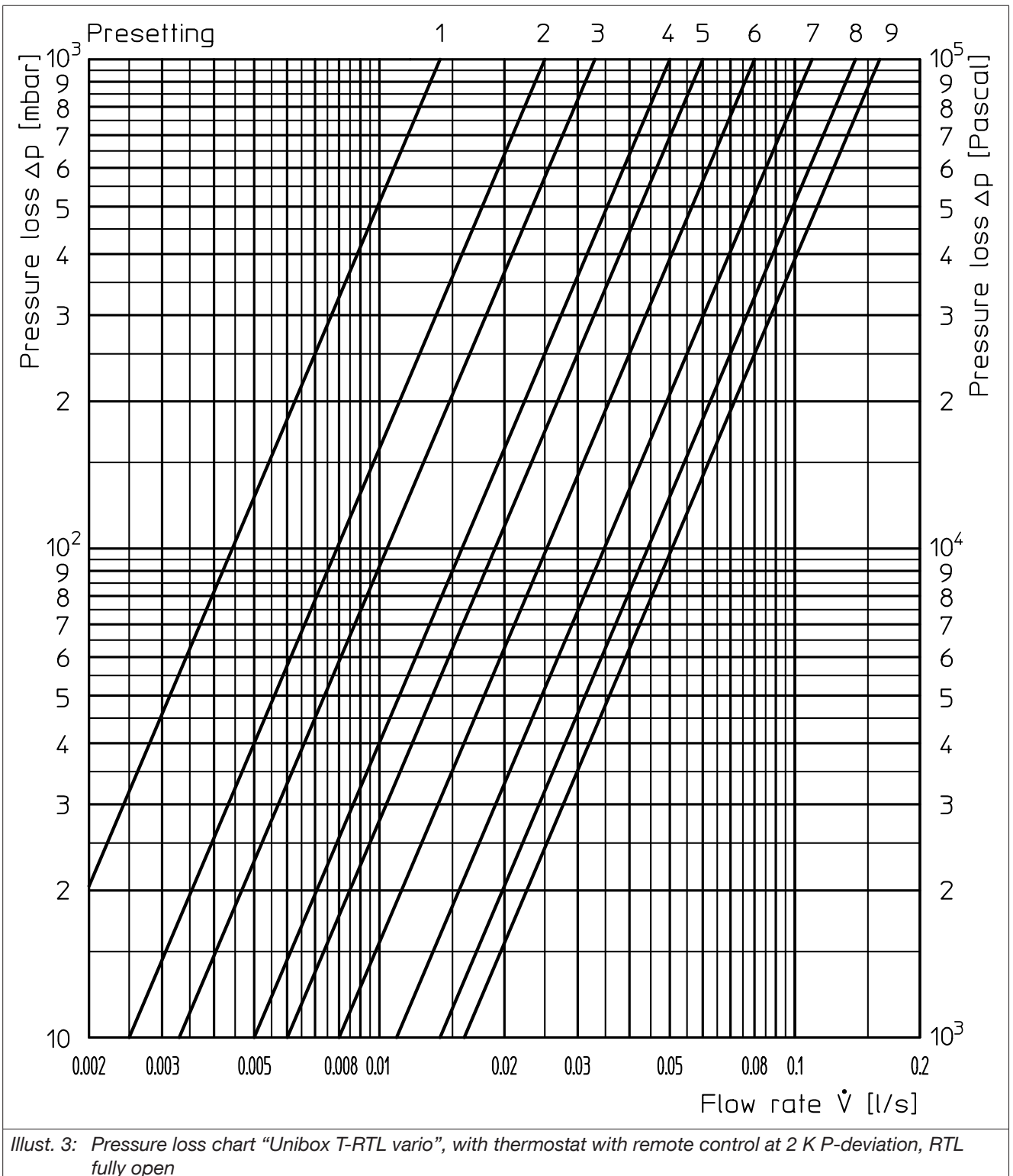
Max. operating temperature t_s	100°C
Max. operating pressure p_s	10 bar
Max. differential pressure	1 bar
Installation depth	57 mm
Thermostat connection thread	M30x1.5
Fluid	Water, mixtures of water and glycol

1.2.1 Dimensions



Illust. 2: Dimensions “Unibox T-RTL vario” in mm (front and side view)

2. Characteristic lines



OVENTROP

GmbH & Co. KG

Paul-Oventrop-Straße 1

59939 Olsberg

GERMANY

www.ventrop.com

1022734_DA

V02.12.2020