

**Application:**

Oventrop compact distributor for the connection of the “Regumat” stations DN 32 with pump ball valve at the pump inlet and universal thermal insulation (“Regumat” DN 25 with connection fittings).

Consisting of distributor, thermal insulation and wall bracket including fixing material.

The distributor is, for instance, used for volume flow distribution from the heat generator to several heating circuits.

**Advantages:**

- space-saving installation
- simple installation
- problem-free water distribution even for small performance ranges

**Models:**

for 2 heating circuits	1351672
for 3 heating circuits	1351673
for 4 heating circuits	1351674
for 5 heating circuits	1351675

**Materials:**

Distributor:	Steel, primed black
Thermal insulation:	Expanded polypropylene (2 and 3 heating circuits) Polyurethane rigid foam (4 and 5 heating circuits), CFC-free in a black aluminium coarse grain jacket
Wall bracket:	Steel, galvanised

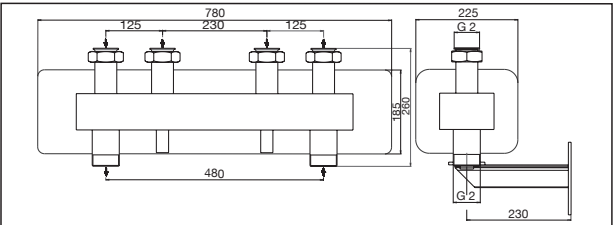
**Connections:**

To heating circuit:	G 2 collar nut, flat sealing
To boiler:	G 2 male thread, flat sealing

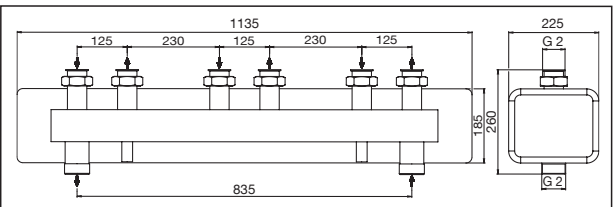
**The direction of flow must be observed!**

**Technical data:**

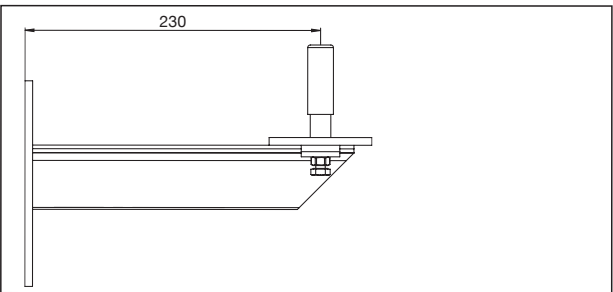
Max. operating pressure $p_s$ :	4 bar
Max. operating temperature $t_s$ :	110 °C
2 and 3 heating circuits:	
Max. flow rate up to:	9 m³/h
Recommended application range :	max. 210 kW ( $\Delta T = 20$ K)
4 and 5 heating circuits:	
Max. flow rate:	12 m³/h
Recommended application range:	max. 280 kW ( $\Delta T = 20$ K)



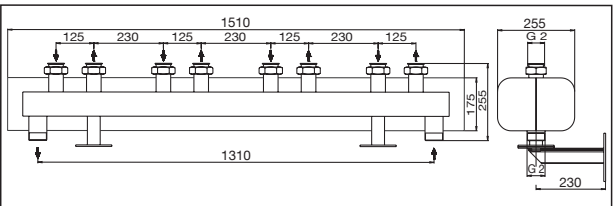
Dimensions distributor DN 32, 2-fold



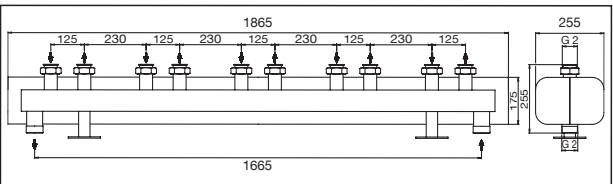
Dimensions distributor DN 32, 3-fold



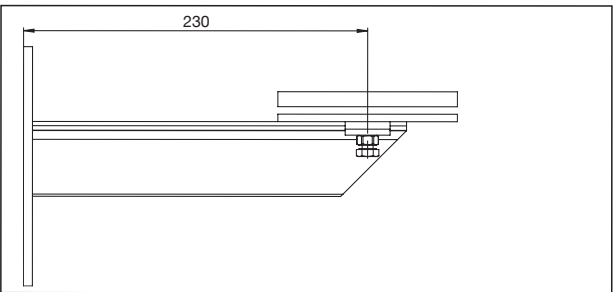
Dimensions wall bracket for 2- and 3-fold distributors



Dimensions distributor DN 32, 4-fold



Dimensions distributor DN 32, 5-fold



Dimensions wall bracket for 4- and 5-fold distributors

Subject to technical modifications without notice.

Product range 6  
ti 294-DE/10/MW  
Edition 2017