

Duo heating circuit separation module

Extension module for Regudis W-HTE



Duo heating circuit separation module for system separation, which can be installed as an optional extension module to the Regudis W-HTE dwelling station in order to separate the dwelling-side heating circuit from the building-side heating circuit.

The Duo heating circuit separation module consists of the following components:

- Heat exchanger with 30 plates
- Thermal insulation made of expanded polypropylene for heat exchanger
- Control valve with thermostatic head with immersion sensor
- Safety temperature monitor
- Cap valve
- Diaphragm expansion tank 8 l
- Safety valve 3 bar
- Pressure gauge
- High-efficiency pump Wilo Para 15-130/6-43 SC-6
- Check valve
- Brass elbow
- Stainless steel corrugated pipe

Features

- + Safe connection to local heating networks
- + Simple system separation of the heating circuits
- + Compatibility with the existing product range

Technical data

| | |
|----------------------------|---|
| Control range | 35 °C to 70 °C |
| Max. operating temperature | 90 °C |
| Max. ambient temperature | 60 °C |
| Max. operating pressure | 10 bar |
| Medium | Heating or cooling water according to VDI 2035 or ÖNORM 5195 Water glycol mixtures with a max. glycol content of 50% |

Product details

Functions

Temperature control

Temperature control is achieved by limiting the flow rate on the primary side. The primary volume flow is throttled or increased depending on the desired radiator heating circuit temperature. The temperature is determined by a sensor element positioned in the medium and connected to the thermostatic head via a capillary tube. To minimise the flow through the heat exchanger outside of heating phases, the immersion sensor is positioned in the heat exchanger. As a result, the heat exchanger is only flowed through until the set temperature at the thermostat head is exceeded. This prevents permanently high return temperatures at times when no heat is being drawn off by the heating circuit.

Volume flow control

The Wilo Para 15-130/6-43 SC-6 heating circuit pump supplies the secondary heating circuit on the dwelling side.

Venting and filling

Venting and filling is carried out via the Multidis SF heating circuit distributor/collector or the cap valve. To facilitate venting, there is a check valve below the pump of the module.

Safety devices

A safety valve in the heating circuit opens when the pressure exceeds 3 bar. Additionally a safety temperature monitor protects the surface heating circuit from excessive temperatures in the event of a fault.

Applications

The Duo heating circuit separation module is intended as an extension module for the Regudis W-HTE dwelling station. It is suitable for integrated mounting at a defined position in the flush-mounted cabinet, item no. 1344599, or in the surface-mounted cabinet, item no. 1344699. The module is suitable wherever system separation is required, e.g. in properties with local heating or in the case of open vented surface heating systems.


Dimensions

When integrating the Duo heating circuit separation module for surface heating into the cabinets, please note that the installation depth is approx. 145 mm.

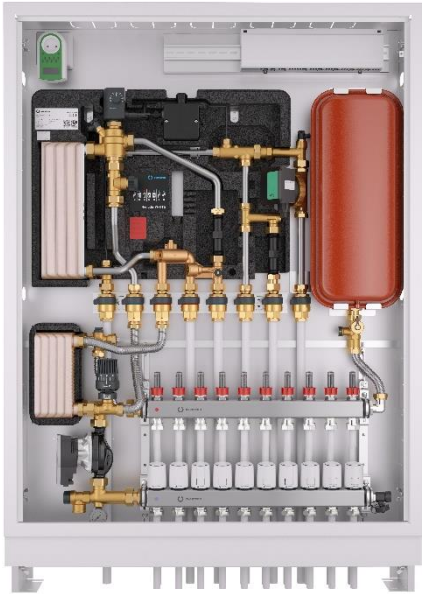
Selection

Item numbers

Duo heating circuit separation module

| Description | Art.-Nr. |
|---|----------|
|  For system separation of the heating circuit (surface heating) on the dwelling side from the heating circuit on the building side | 1344576 |

Suitable components for cabinet mounting



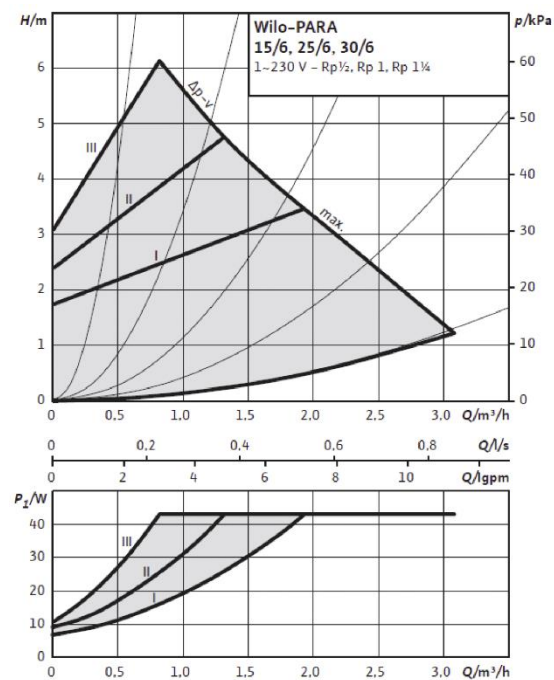
| Product | Item no. |
|---|-------------------------|
| Surface- / Flush-mounted cabinet for Regudis W-HTE | 1344699 / 1344599 |
| Dwelling station Regudis W-HTE | 1344030-32 / 1344050-52 |
| Connection and shutoff set for Regudis W-HTE | 1344680 |
| Duo heating circuit separation module for Regudis W-HTE | 1344576 |
| Potable water circulation module for Regudis W-HTE | 1344555 |
| Multidis SF Heating circuit distributor/collector | 1406352 - 1406360 |
| Actuator Aktor T 2P | 1012452 |
| Electrical connecting block for surface heating | 1400983 |

Design Charts

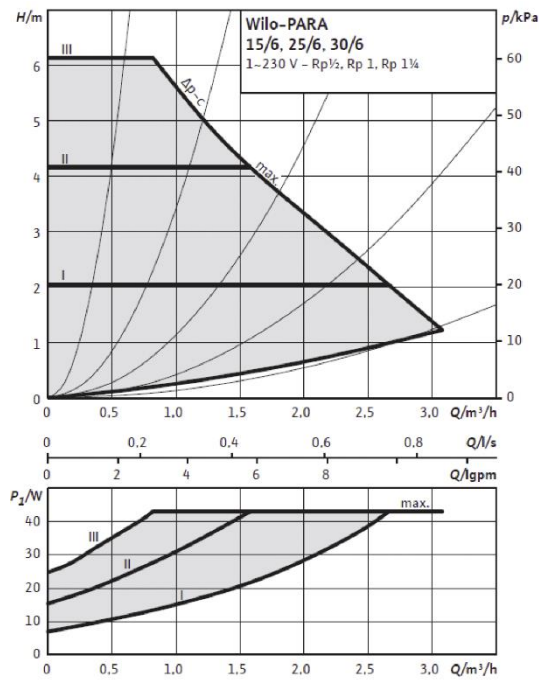
The heat exchanger output of the Duo heating circuit separation module results from the system temperatures on the primary and secondary side (example for surface heating: primary circuit 50/35°C, secondary circuit 33/38°C, output approx. 6 kW). When changing the system temperatures and temperature spreads, the output ranges change.

Characteristic line Wilo Para 15-130/6-43/SC-6

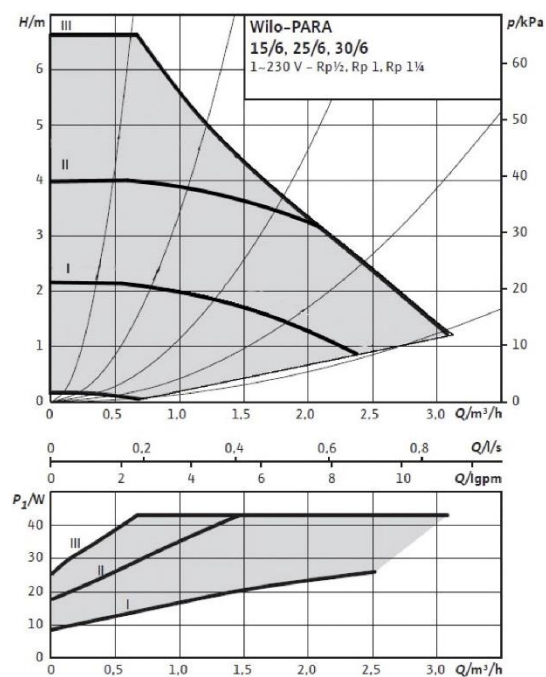
Control type differential pressure variable:



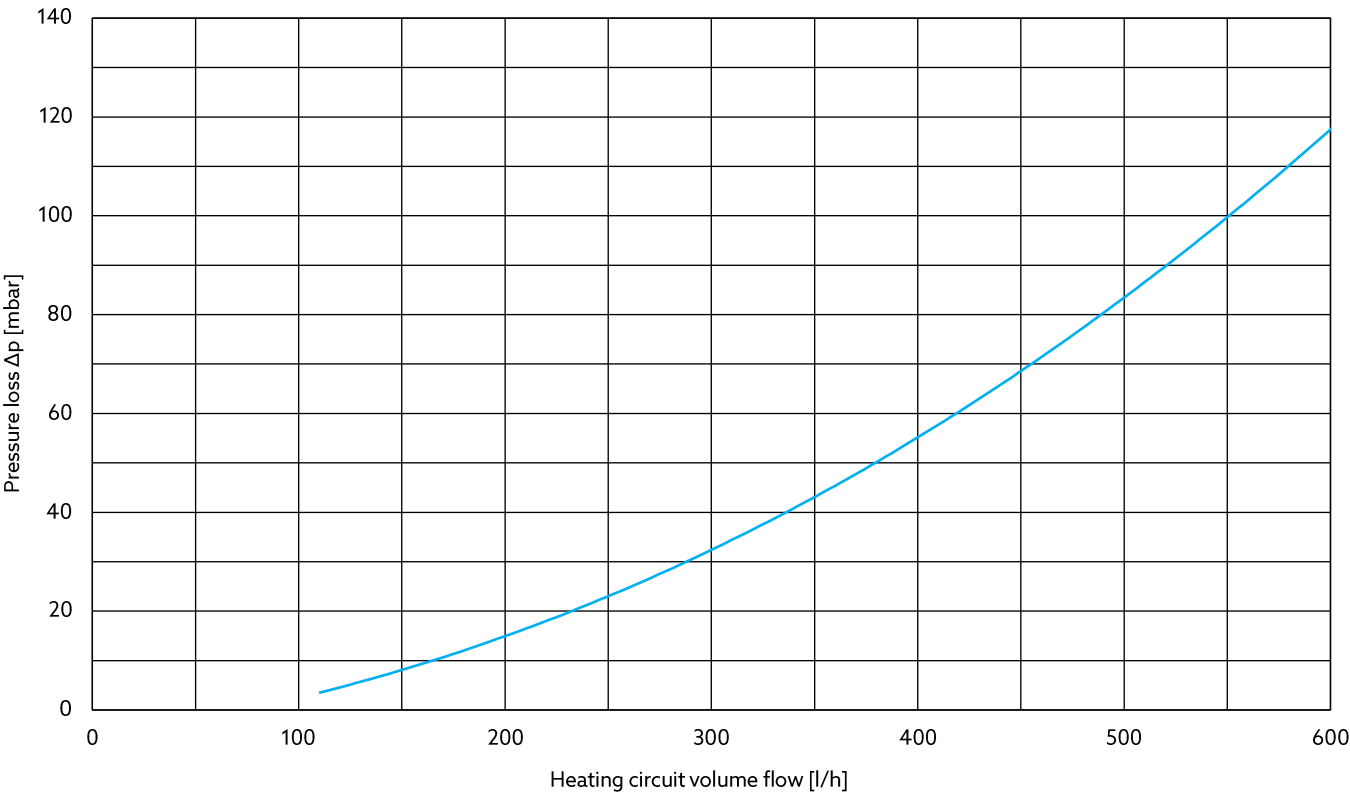
Control type differential pressure constant:



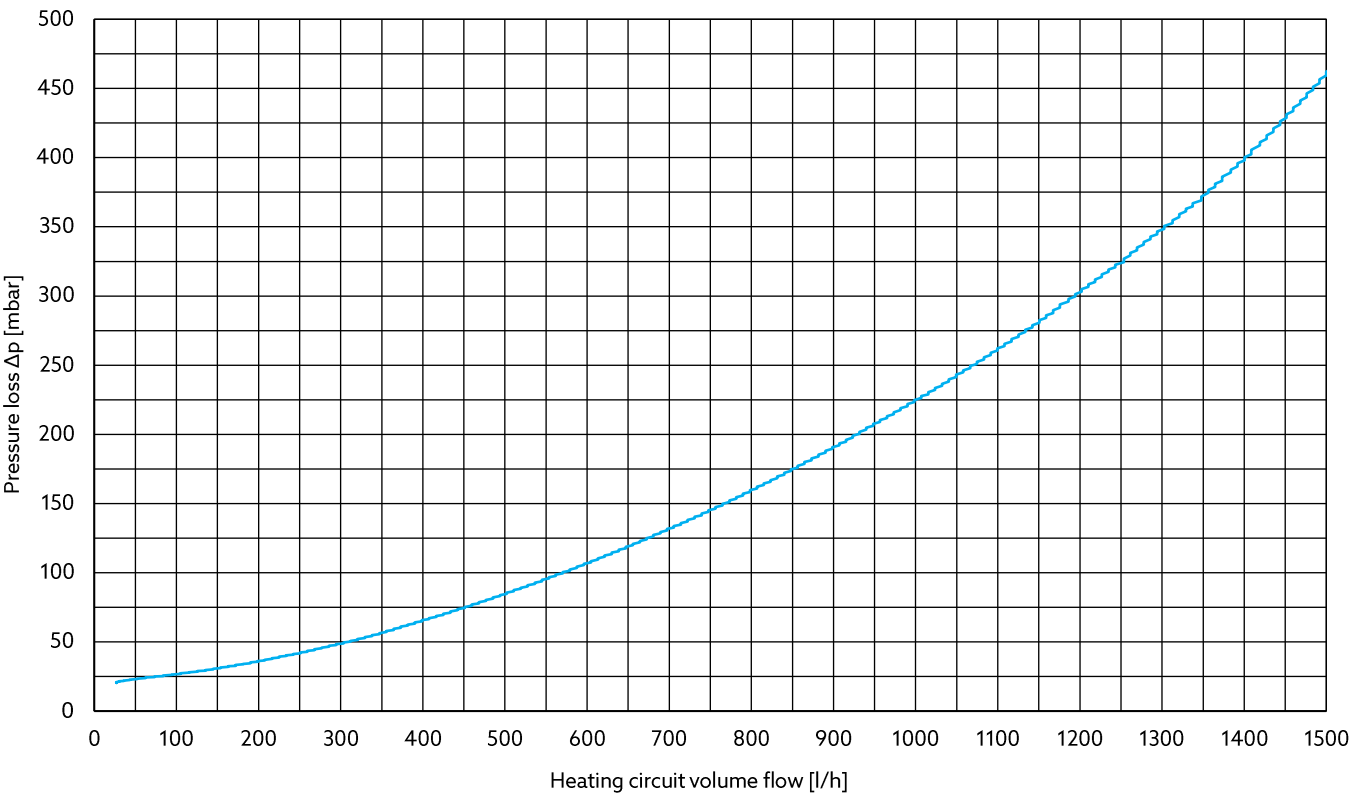
Control type constant speed:



Pressure loss heating circuit (primary circuit) of Duo heating circuit separation module



Pressure loss heating circuit (secondary circuit) of Duo heating circuit separation module



Modifications reserved • All rights reserved • © 2024 Oventrop GmbH & Co. KG
EN-06303-13445-DB-V2404 – January 2024