



Room and return temperature control
"Unibox T-RTL R-Tronic"
Data sheet



1. Functional description

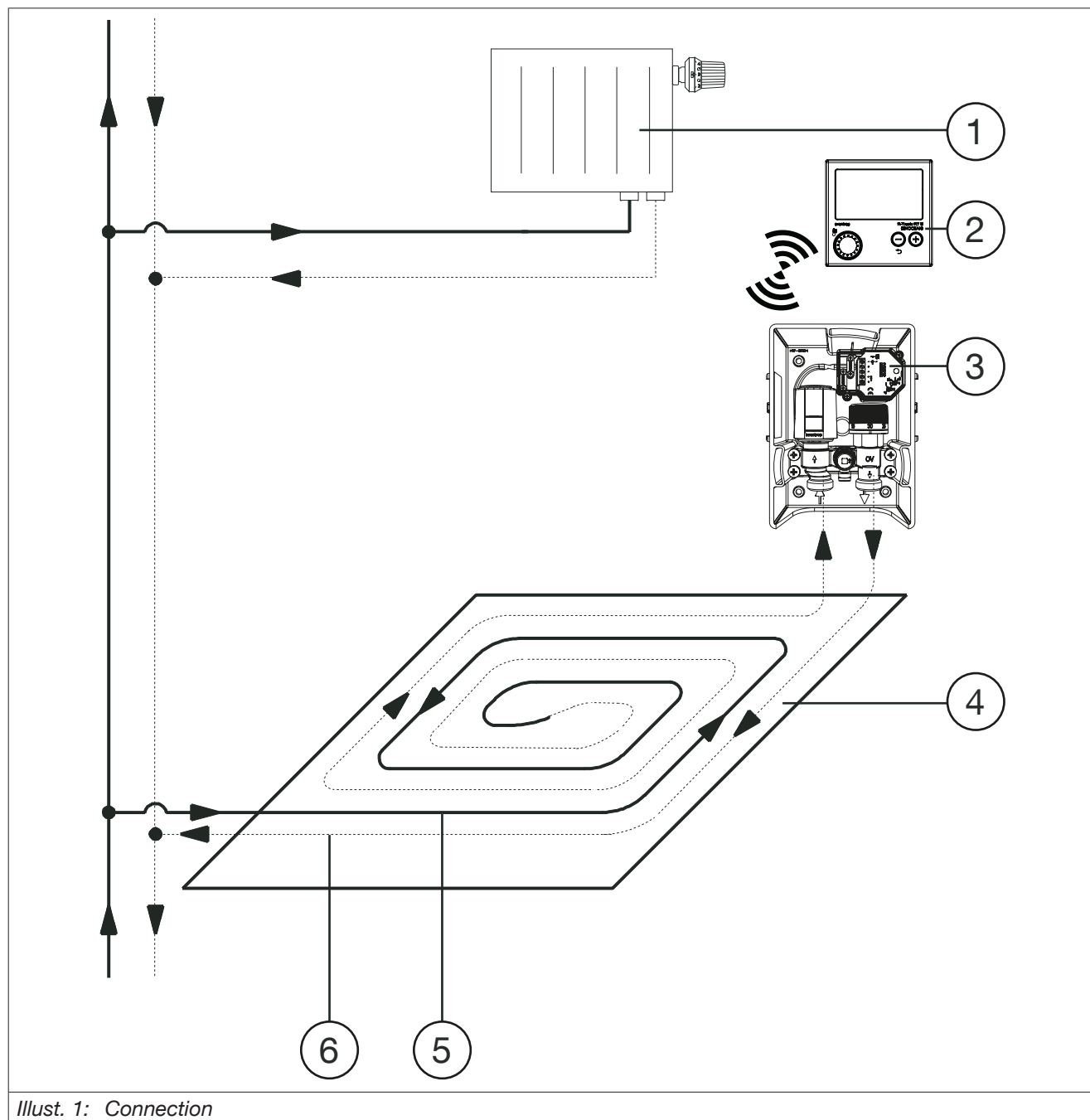
1.1 Functional description

The “Unibox T-RTL R-Tronic” is used for individual room temperature control and for return temperature limitation in a surface temperature regulation system.

The integrated thermostatic valve is equipped with a presettable valve insert and thus enables the volume flow to be accurately adapted to the required heat demand and hydronic balancing to be carried out.

The installation position of the “Unibox T-RTL R-Tronic” has to be chosen so that heating fluid passes first through the heating circuit and then through the valve of the “Unibox T-RTL R-Tronic”. On its way from the entry into the heating surface to the “Unibox T-RTL R-Tronic”, the heating fluid cools down. You can set the desired room temperature by modifying the nominal temperature at the wireless thermostat “R-Tronic”. The wireless thermostat “R-Tronic” communicates with the wireless receiver “R-CON FBH”. Flow control is carried out by the actuator connected to the wireless receiver “R-CON FBH”.

1.2 Connection



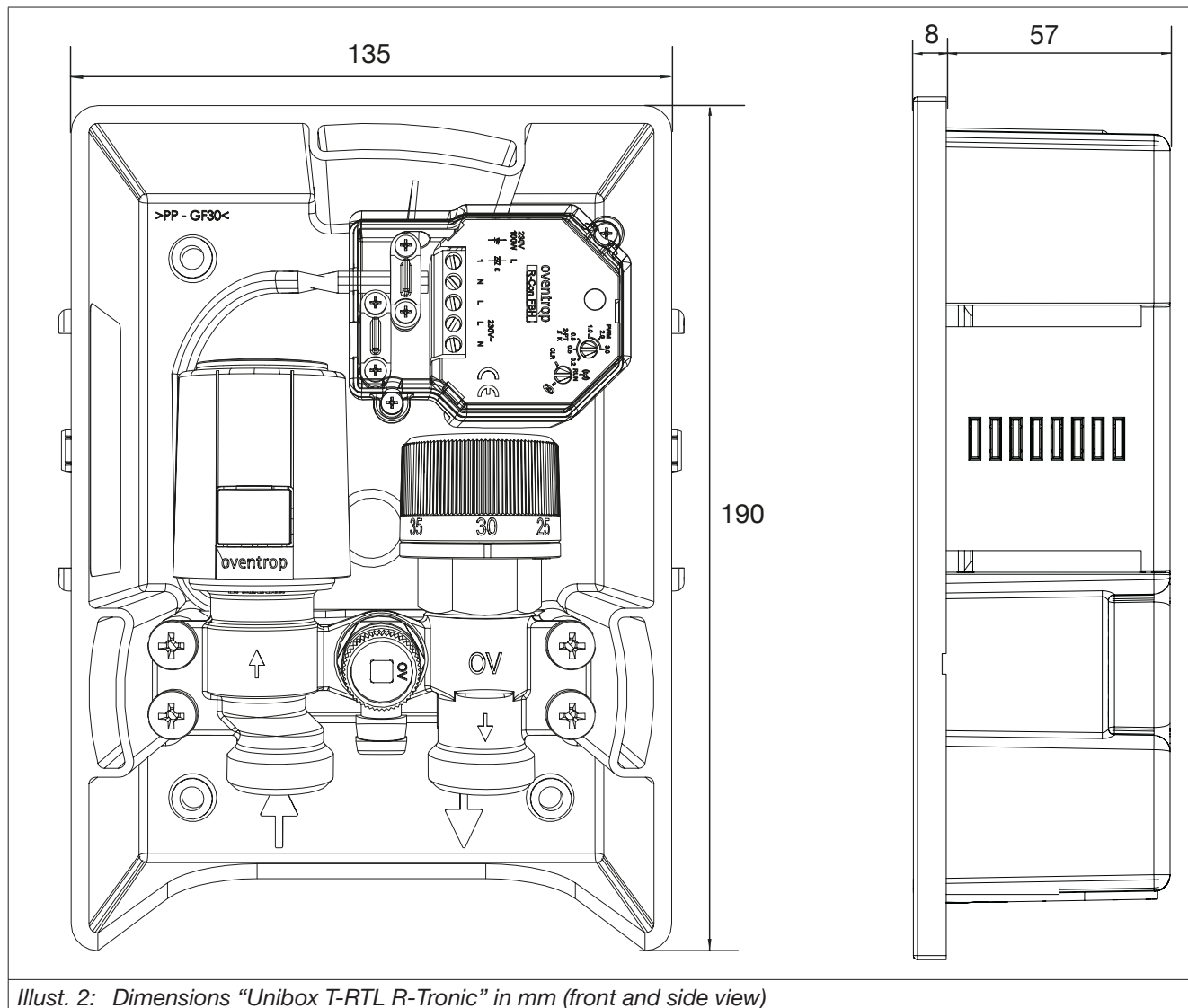
Illust. 1: Connection

(1)	Radiator
(2)	Wireless thermostat "R-Tronic"
(3)	"Unibox T-RTL R-Tronic"
(4)	Surface temperature regulation circuit
(5)	Supply
(6)	Return

1.3 Technical data

General information	
Ambient temperature	0 °C to 50°C, not condensing
Fluid	Water, mixtures of water and glycol
Max. operating pressure p_s	10 bar
Installation depth	57 mm
Actuator connection thread	M30x1.5
Type of construction	independently mounted electronic control unit
Type of connection	Type X
Permissible cable cross-section	0.5 – 4.0mm ² , stripping 5-6mm
Operation mode	Type 1.Y
Software class	A
Pollution degree	2
Rated surge voltage	2500V
Temperature for ball pressure test	125°C
R CON FBH	
Transmission frequency	868 MHZ
Power supply	230V / 50-60 Hz
Protection	IP 20

1.3.1 Dimensions



Illust. 2: Dimensions "Unibox T-RTL R-Tronic" in mm (front and side view)

