

#### General information:

Oventrop gauge cock with female thread for pressure gauges, with test flange 25 x 60 mm.

**Item no.:** 1110204

#### Technical data:

**Size:** DN 15, G ½  
**Body:** Brass (CW617N), unplated  
**Operating element:** Red plastic handle  
**Connections:** Female thread according to ISO 228  
 Test flange 25 x 60 mm  
**Application:** Central heating systems  
**Max operating pressure  $p_S$ :** 10 bar (PN 10)  
**Operating temperature  $t_S$ :** (-10) 0 °C up to +120 °C  
 (prevent formation of ice)

#### Installation:

The gauge cock is connected to the pipework (connection side with hexagon).

A suitable flat seal has to be installed between the gauge cock and the pressure gauge.

Alternatively, the pressure gauge can be tightly screwed into the gauge cock with a suitable thread sealant.

The approved rules of technology must be observed.

#### Operation and maintenance:

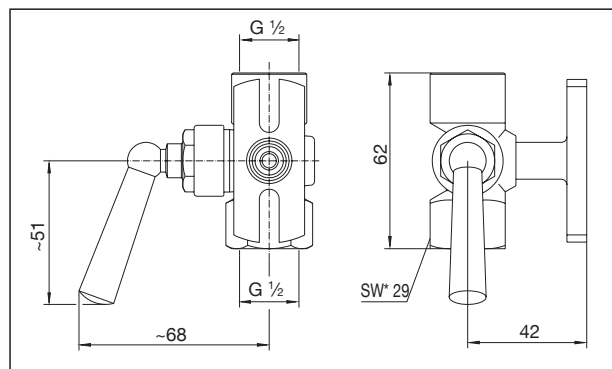
Switching between the settings "Operation", "Venting", "Test" and "Blowing-off" by turning the handle (see illustr. "Operation").

When switching from "Operation" to "Venting", the fluid is isolated and the pressure gauge is vented. A few drops of the fluid may escape from the test flange.

Re-adjustment of the gauge cock may become necessary to guarantee tightness during operation, for instance in case of:

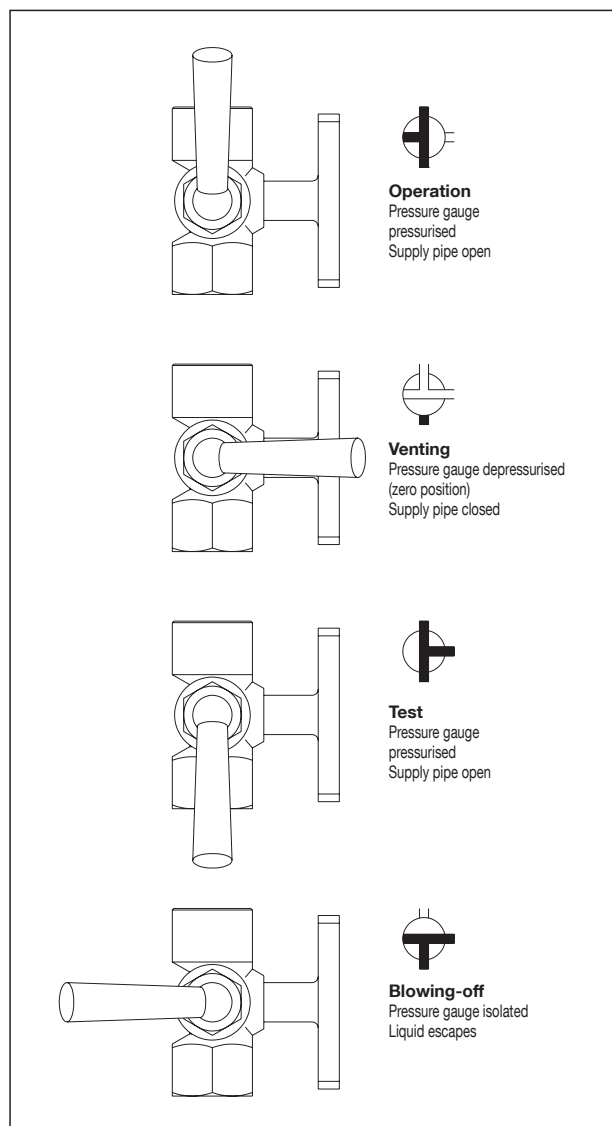
- Operation at low temperatures
- Extreme temperature changes
- Use of penetrating additives in heat transfer liquids

Re-adjustment is carried out by carefully turning the collar nut under the handle clockwise with the help of a 19 mm spanner.



Dimensions

\*SW = Spanner size



Operation

Subject to technical modifications without notice.

Product range 6  
 ti 265-EN/10/MW  
 Edition 2017