

Application:

Oventrop compact distributor for the connection of the “Regumat 220/280” stations DN 40/50 (“Regumat” DN 25/32 with connection fittings).

Consisting of distributor and thermal insulation.

The distributor is, for instance, used for volume flow distribution from the heat generator to several heating circuits.

Advantages:

- space-saving installation
- simple installation
- problem-free water distribution even for small performance ranges

Models:

for 2 heating circuits
for 3 heating circuits
for 4 heating circuits

Item no.:

1351692
1351693
1351694

Materials:

Distributor:	Steel, primed black
Thermal insulation:	Polyurethane rigid foam, CFC-free in a black aluminium coarse grain jacket

Connections:

To heating circuit:	G 2 collar nut, flat sealing
To boiler:	Flange DN 80/PN 10
Sensor connection:	Rp 1/2

Technical data:

Max. operating pressure p_s :	6 bar
Max. operating temperature t_s :	110 °C
Max. flow rate:	18.0 m³/h
Recommended application range:	max. 420 kW ($\Delta T = 20$ K)

Set of mounting legs:

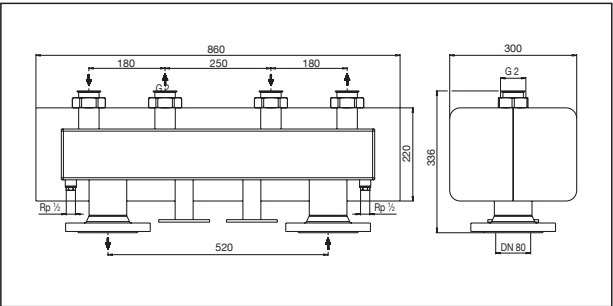
The height of the mounting legs for the distributor/“HydroFixx” DN40/50 is infinitely adjustable.

The set consists of two mounting legs, sound insulation boards and fixing material.

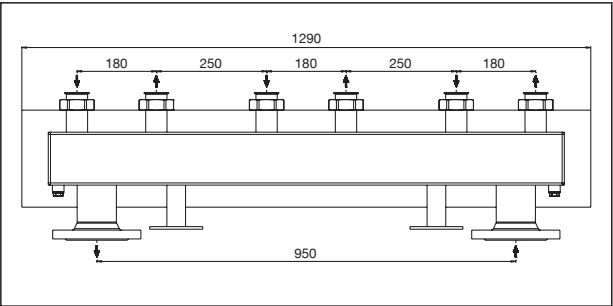
Item no.: 1351697

Materials:

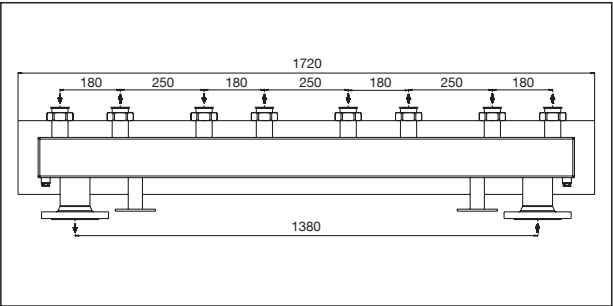
Mounting leg:	Steel galvanised
Sound insulation board:	Sponge rubber



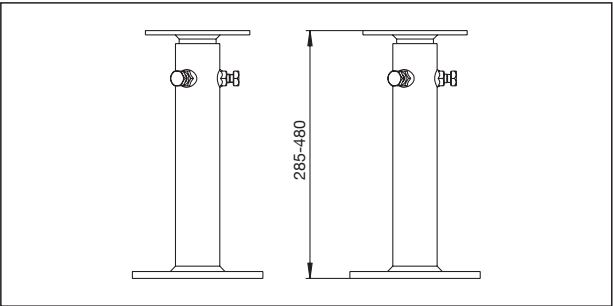
Dimensions distributor DN40/50, 2-fold



Dimensions distributor DN40/50, 3-fold



Dimensions distributor DN40/50, 4-fold



Dimensions set of mounting legs

Subject to technical modifications without notice.