

#### Tender specification:

Oventrop fittings “Multiblock TU” with infinitely adjustable presetting for regulation, isolation and conversion from two to one pipe operation (supplied for two pipe operation). Body made of nickel plated brass (marking “OV 1+2” on the valve body), stem made of stainless steel with double O-ring seal. Conversion and isolating stem made of brass with O-ring and cap with flat seal made of PTFE. Technical data as thermostatic valves “AV 9”. The valve insert is replaceable using the special tool “Demo-Bloc”, item no. 1188051, without draining the system.

Plastic design covers in white, anthracite, chrome plated or stainless steel finish are available as accessories.

#### Models:

#### Item no.:

“Multiblock TU” for radiators with:

G ¾ male thread according to DIN EN 16313 (cone “Euro”)	
Straight pattern	1184023
Angle pattern	1184024
G ½ female thread	
Straight pattern	1184033
Angle pattern	1184034

#### Technical data:

Operating temperature $t_s$ :	2 °C up to 120 °C (for short periods up to 130°C)
Max. operating pressure $p_s$ :	10 bar
Fluid:	Water and suitable water and glycol mixtures according to VDI 2035 / ÖNORM 5195 (max. glycol proportion 50%). Not suitable for steam, oily and aggressive fluids.
Max. differential pressure:	200 mbar
Pipework connections:	G ¾ male thread according to DIN EN 16313 (cone “Euro”)
Distance between pipe centres:	50 mm

#### Function:

The fitting “Multiblock TU” is a combination consisting of a thermostatic valve with infinitely adjustable presetting and an isolating fitting. Combined with a thermostat, it regulates the room temperature by varying the volume flow of heating water. Convertible from two to one pipe operation (supplied for two pipe operation).

#### Application:

The fitting “Multiblock TU” is used in central heating and cooling systems (one or two pipe operation) with closed circuits for room temperature control at radiators with supply and return pipe connection with a distance of 50 mm between the pipe centres.

The position of the supply and return pipe connection is optional and depends on the type of radiator. Please observe the corresponding product description. For the silent operation of the installation, the maximum differential pressure across the fitting should not exceed 200 mbar.

The fitting must only be installed in a clean pipework system and must only be operated with a clean unpolluted fluid.

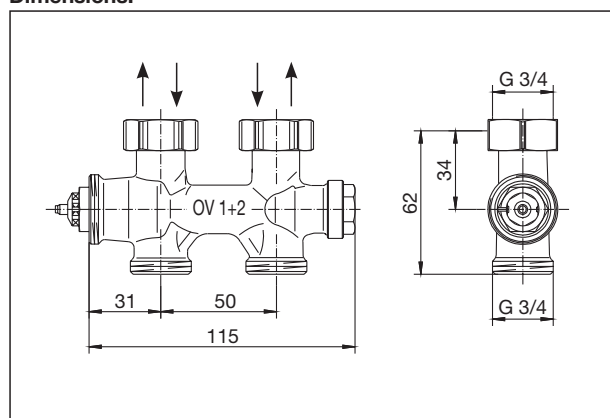
When installing the pipework, please make sure that the pipes run in parallel and are free from tension.

Connection of the pipework to the male threads G ¾ according to DIN EN 16313 (cone “Euro”) by use of compression fittings. For the connection of copper, precision steel, stainless steel and plastic pipes as well as the composition pipe “Copipe”, the Oventrop compression fittings are to be used (alternatively the compression fittings of other manufacturers - except for the composition pipe “Copipe” - which are suitable for the connection to male thread G ¾ according to DIN EN 16313 (cone “Euro”) may also be used).

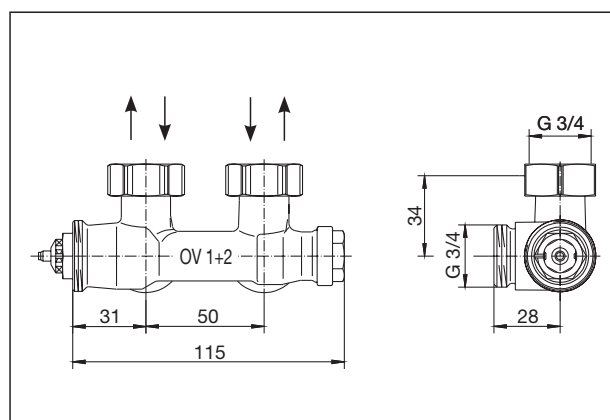


Fittings “Multiblock TU”

#### Dimensions:



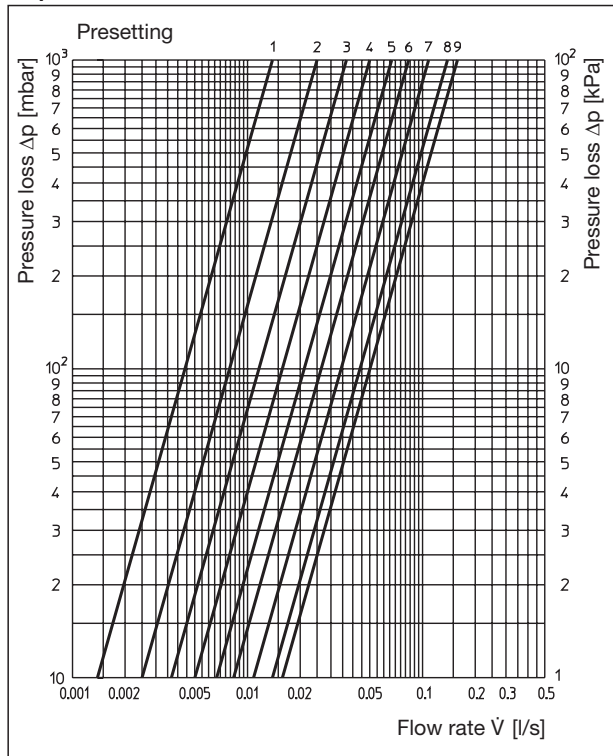
Straight pattern



Angle pattern

**Charts:**

**Two pipe operation**  
**All patterns at 2 K P-deviation**

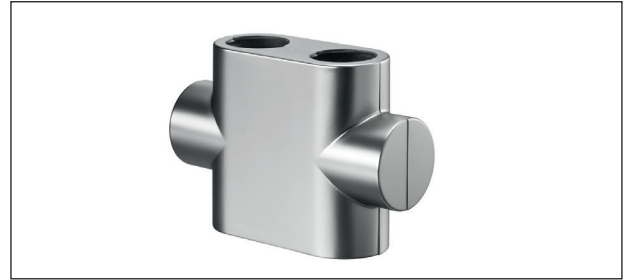


Presetting	1	2	3	4	5	6	7	8	9
$k_v$ value	0.05	0.09	0.13	0.18	0.24	0.30	0.39	0.50	0.57

**Accessories:**

**Design covers for panelling**

**Straight pattern**

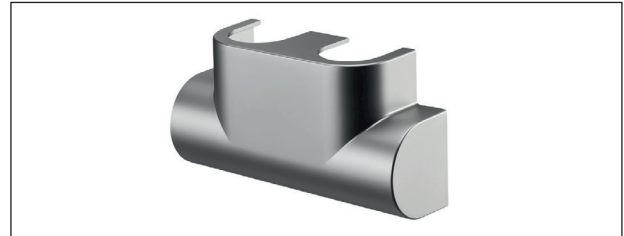


anthracite  
stainless steel finish  
white  
chrome plated

**Item no.:**

1184088  
1184090  
1184095  
1184097

**Angle pattern**



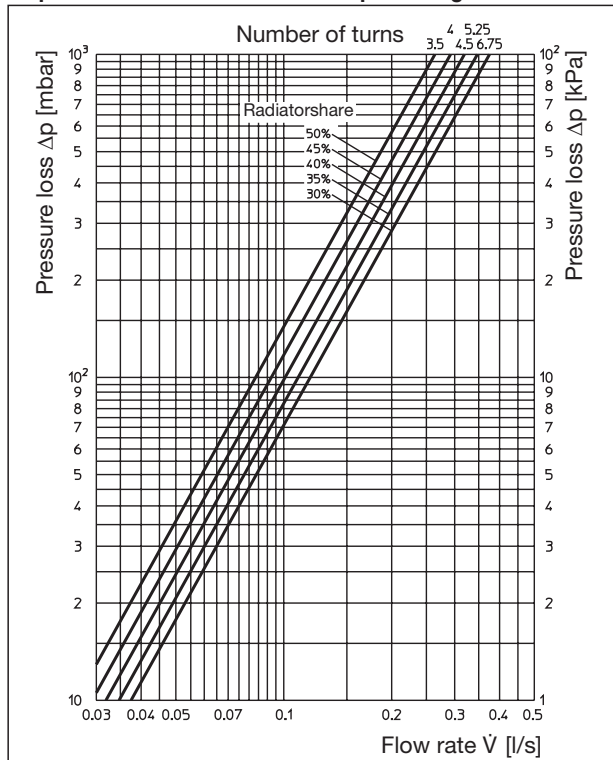
anthracite  
stainless steel finish  
white  
chrome plated

**Item no.:**

1184089  
1184091  
1184096  
1184098

**One pipe operation**

**All patterns at 2 K P-deviation and presetting “g”**



Special tool **“Demo-Bloc”** for replacing the valve inserts without draining the system



**Item no.:** 1188051

Subject to technical modifications without notice.

Product range 1  
ti 361-EN/20/MW  
Edition 2018