

# HydroControl A

## Shutoff valves PN 25 / PN 16

### DN 15...50



The HydroControl A is a shutoff valve for pipelines in heating and cooling systems. It consists of a flow optimised Y-pattern body, a valve insert with low pitch, double O-ring sealing and ergonomically designed handwheel as well as a HydroPort auxiliary valve. All functions are accessible from the top.

#### Functions

- Shutoff
- Connection for impulse tube
- Quick connection for the impulse tube of the HydroControl D differential pressure regulator
- Filling, draining and venting

#### Features

- + Reliable and robust design
- + All functions always included for easy connection
- + New HydroPort auxiliary valve for easy, quick and safe connection of accessories

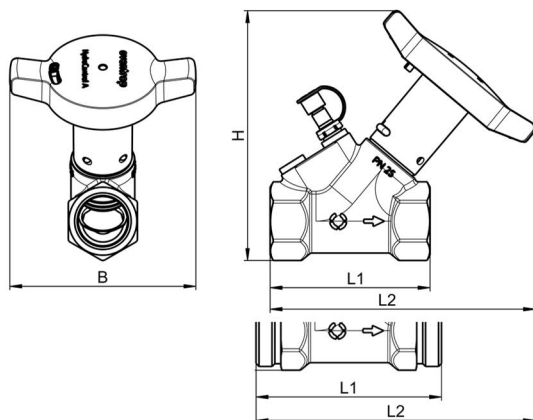
# Product Details

## Technical Data

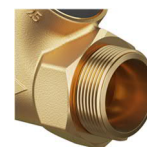
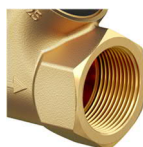
Nominal sizes	DN 15...50
Variants	With internal thread according to EN 10226 With external thread according to ISO 228
Operating temperature	-20...150 °C
Operating pressure	Internal thread: max. 25 bar / PN 25 External thread: max. 16 bar / PN 16
Medium	Heating and cooling water according to VDI 2035 or ÖNORM 5195 Water-glycol mixtures with max. 50% glycol content
Kvs values	4.1...49.8

## Dimensions

DN	INTERNAL THREAD			EXTERNAL TRHEAD			B [mm]	H [mm]	Weight [kg]
	Conne- ction	L1 [mm]	L2 [mm]	Conne- ction	L1 [mm]	L2 [mm]			
15	Rp ½	72	142	G ¾	88	149	109	129	0.57
20	Rp ¾	84	152	G 1	93	154	109	136	0.67
25	Rp 1	98	160	G 1 ¼	109	164	109	147	0.99
32	Rp 1 ¼	116	172	G 1 ½	134	182	109	157	1.44
40	Rp 1 ½	124	177	G 1 ¾	144	187	109	164	1.80
50	Rp 2	155	195	G 2 ¾	166	204	109	184	3.10



## Item Numbers



		INTERNAL THREAD		EXTERNAL THREAD	
DN	Kvs	Connection size	Item no.	Connection size	Item no.
15	4.1	Rp ½	1067524	G ¾	1067624
20	7.8	Rp ¾	1067526	G 1	1067626
25	14.1	Rp 1	1067528	G 1 ¼	1067628
32	24.8	Rp 1 ¼	1067530	G 1 ½	1067630
40	32.4	Rp 1 ½	1067532	G 1 ¾	1067632
50	49.8	Rp 2	1067536	G 2 ¾	1067636

# Accessories

## HydroPort adapter



With external thread G ¾.  
For connecting accessories to HydroPort auxiliary valves.  
Also suitable for permanent connection, e.g. for impulse tubes of third-party controllers. This adapter is not required for connecting the impulse tube of the HydroControl D.

Suitable for

All nominal sizes

Item no.

1069601

## Insulation shells



Only for heating systems. Meets the requirements of Appendix 8 to section 69 and 71 (1), line ee) of the German Building Energy Act (GEG). Building material class B2 according to DIN 4102 / E according to EN 13501-1.  
Operating temperature up to 110 °C.

Suitable for

Item no.

DN 15

1069610

DN 20

1069611

DN 25

1069612

DN 32

1069613

DN 40

1069614

DN 50

1069615

## Fittings



Connection set with externally threaded tailpipes.  
Consisting of two tailpipes, unions, nuts and sealing rings.  
Suitable for HydroControl A with external threads.

Size

Suitable for

Item no.

R ½

DN 15

1140792

R ¾

DN 20

1140793

R 1

DN 25

1140794

R 1 ¼

DN 32

1140795

R 1 ½

DN 40

1140796

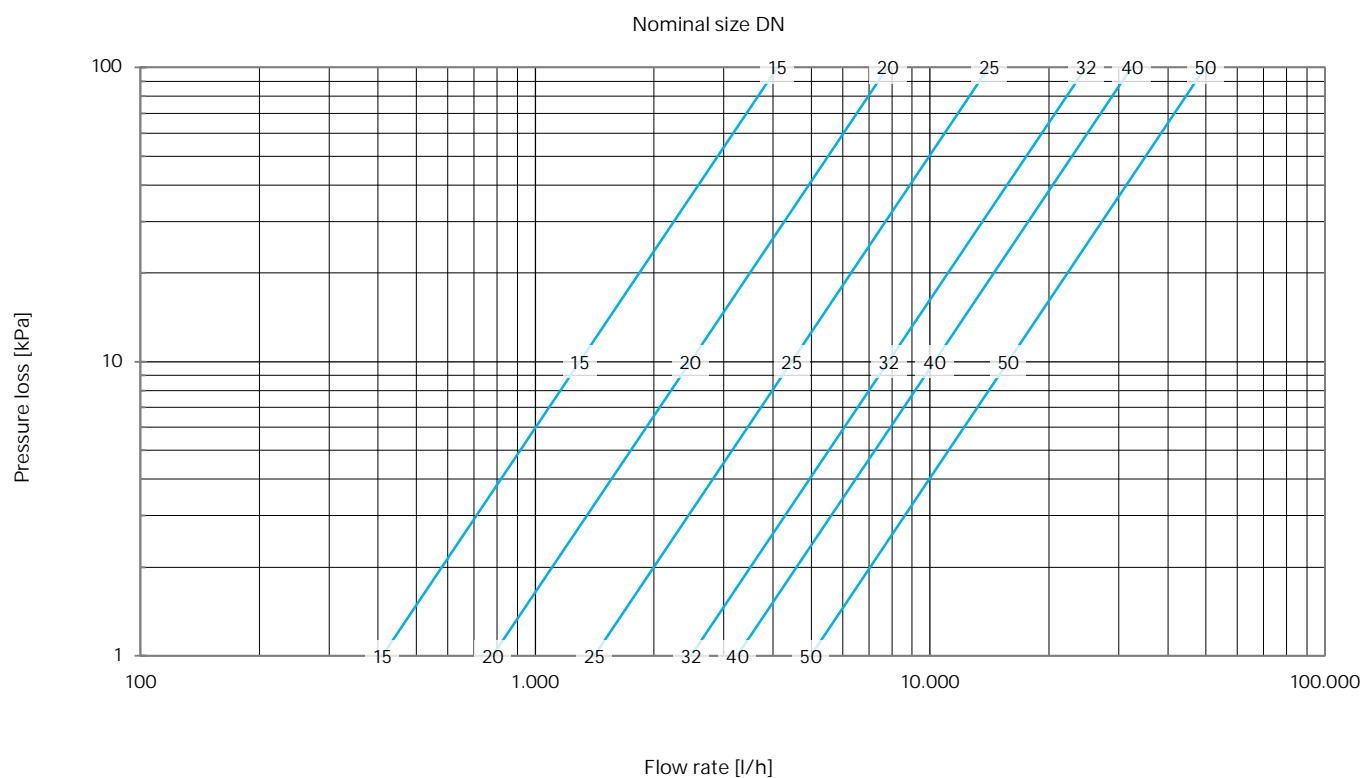
R 2

DN 50

1140797

# Sizing

## Flow Chart



## Kvs values

DN 15	DN 20	DN 25	DN 32	DN 40	DN 50
4.1	7.8	14.1	24.8	32.4	49.8

Subject to changes • All rights reserved • © 2021 Oventrop GmbH & Co. KG  
EN-03123-106752-DB-V2328 – July 2023