



**Regudis W-HTE GT**  
**Electronic dwelling station**  
Every gas boiler is replaceable.

# Energy turnaround in five words: **Gas boiler out, Regudis in.**

The *modernisation of heating systems* is the big challenge for the next few years. In existing buildings, gas boilers can best be replaced with dwelling stations. Conversion to central heat generation in combination with decentralised dwelling stations is *economical and efficient*.

*Central heat generation is future-proof* as renewable energies - such as district heating or heat pumps - can be integrated more easily. Electronically controlled dwelling stations are more efficient than hydraulic ones.

## THE EFFICIENT SOLUTION: OUR ELECTRONICALLY CONTROLLED REGUDIS W-HTE GT



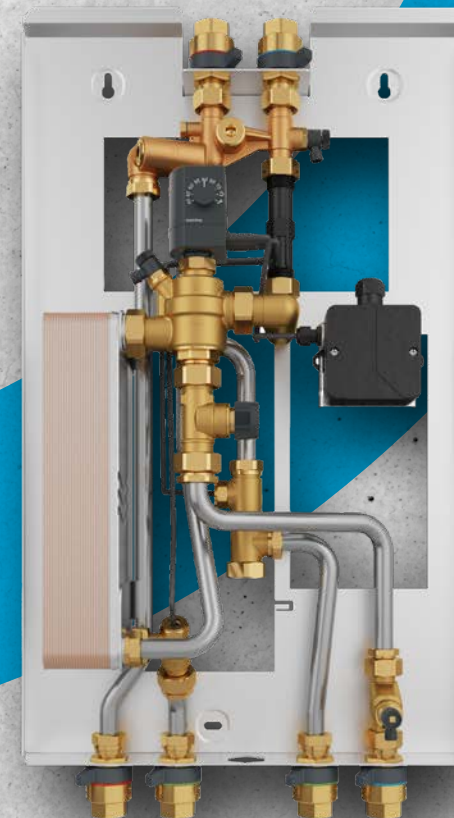
We have a *quick, clean and efficient solution* for replacing gas boilers: our electronically controlled Regudis W-HTE GT dwelling station is *easy to install in just one hour* – even in existing buildings. With a width of 440 mm, it fits exactly in the place of the old gas boiler. And the precisely fitting surface-mounted bonnet is included.

You can *simply use* existing connections for hot and cold water and heating circuit supply and return – because the connections of the Regudis W-HTE GT are arranged in the same way as those of the most common gas boilers. This allows you *to connect without a junction*. The connection to and from the buffer storage cylinder is made from the top via the chimney. And commissioning is just as easy as you are used to with the Regudis W-HTE dwelling station.

You have an installation situation with *critical water conditions*? That's why we offer the heat exchanger with Sealix® protective layer.



Quick  
installation



Precisely  
fitting  
surface-  
mounted  
bonnet



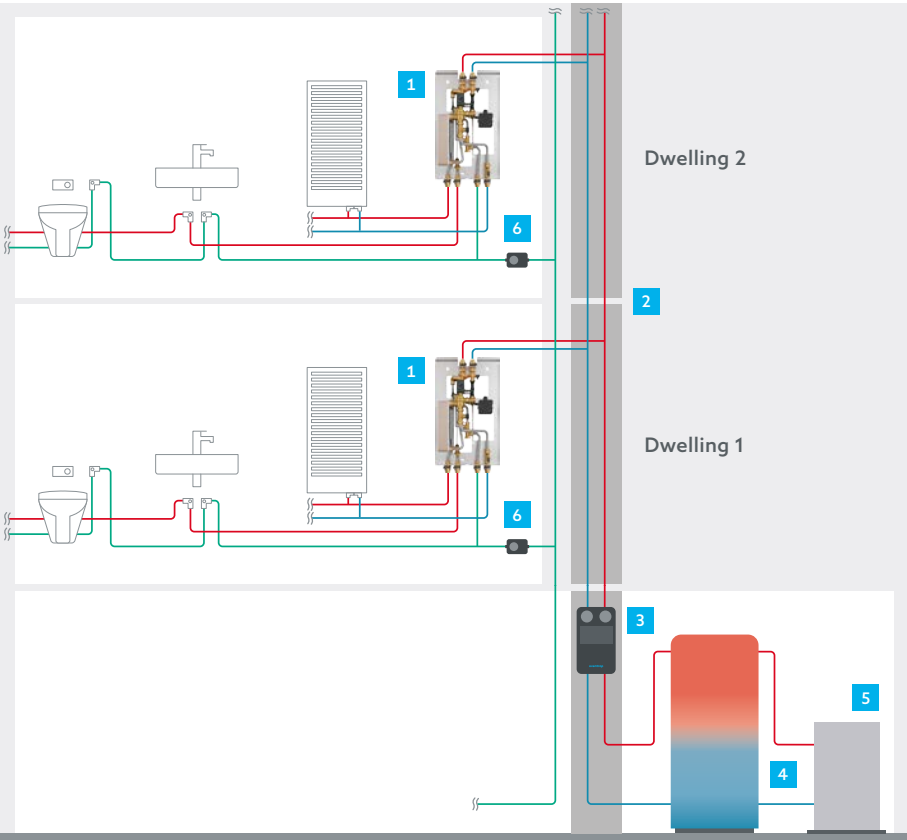
## YOUR BENEFITS AT A GLANCE

- + Well-known concept of the Regudis W-HTE
- + Electronic control for *higher energy efficiency*
- + Lower investment, operating and maintenance costs
- + Low excess temperature
- + Suitable for heat pumps
- + Easily compatible with *renewable energies*
- + Including *perfectly fitting surface-mounted bonnet*

Learn more at [regudis-gt.orientrop.com](https://regudis-gt.orientrop.com)



Quick planning, clean installation:  
Our precisely fitting dwelling station



Replace a gas boiler  
efficiently?

You can install our dwelling station easily, *in just one hour*.

- 1 Regudis W-HTE GT dwelling station
- 2 Primary supply and return in the chimney shaft
- 3 Regumat station for heating circuit connection
- 4 Buffer storage cylinder
- 5 Heat generator, e.g. heat pump or district heating
- 6 Water meter

Our Regudis W-HTE GT  
versions at a glance



Performance range	Heat exchanger	Item no.
Performance range 1	copper brazed	1344230
	copper brazed with Sealix® protective layer	1344250
Performance range 2	copper brazed	1344231
	copper brazed with Sealix® protective layer	1344251

① Station including shutoff valves and surface-mounted bonnet

YOU WANT TO DESIGN DWELLING STATIONS?

We support you in planning and design *right from the start*: You can easily design our dwelling stations with OVplan.

Download OVplan free of charge at [ov.de/ovplan](https://ov.de/ovplan)

We are also happy to help you personally. Just contact your personal Oventrop contact person.



Room climate



Hydronics



Stations,  
Storage cylinders



Potable water



Oil



Smart Home,  
Smart Building

Oventrop is the partner for efficient heating, cooling and clean potable water. The modular systems and services offer pioneering solutions which all HVAC experts use to work with – easily and flexibly – from planning to installation, from industry to trade. As a family business, Oventrop accompanies all its partners over many years – competently and personally.



**oventrop**

Wir regeln das. Seit 1851.

Oventrop GmbH & Co. KG · Paul-Oventrop-Str. 1 · 59939 Olsberg, Germany  
Tel. +49 2962 820 · Fax +49 2962 82400 · mail@oventrop.com · www.oventrop.com