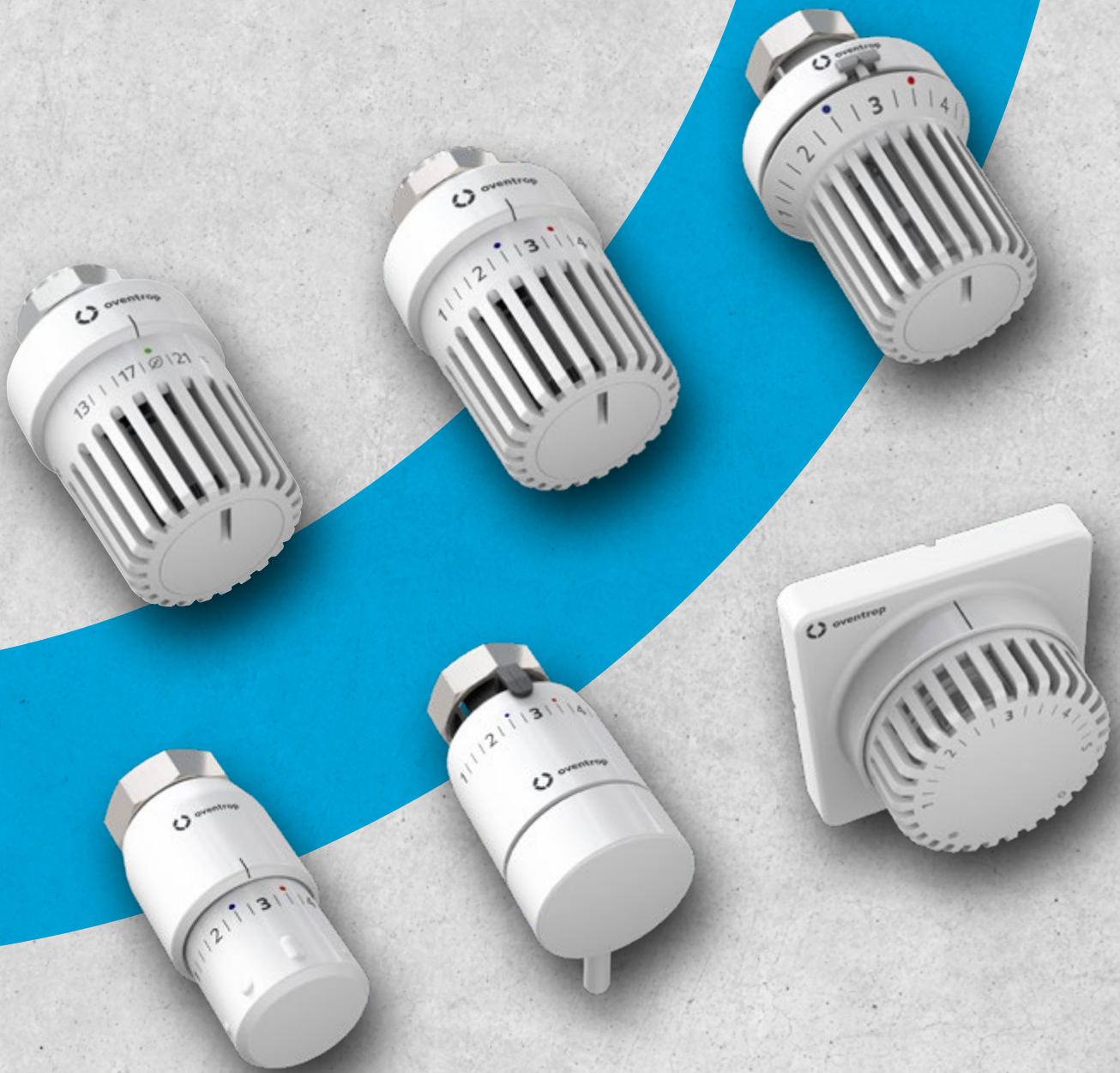


Room Temperature Control

Thermostats, Valves and Fittings

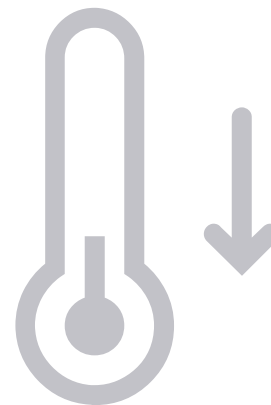




Thermostats

Made by Oventrop

The optimal room temperature control



MADE FOR YOU

The selection of our thermostats and connection fittings is as extensive as today's furnishing styles are diverse. All thermostats impress with their **energy-efficient control behaviour and optimal handling**. The **elegant design** and the colour variations perfectly match your interior style as well as the shape and colour of today's radiators.

Our extensive range of thermostats and fittings is also perfect for modernising your existing conventional radiators or radiators with integrated valve set. And to make sure everything fits, you can also get our thermostats as a **radiator set**. Each set includes all the fittings you need to connect your radiator and control the room temperature in an **energy-efficient** way.

GOOD TO KNOW

We only use **high-quality materials** for our thermostats and fittings. The surfaces are smooth and easy to clean.

PERCEPTIBLY OPTIMISED HEATING

Thermostatic valves are the basis for your **individual feel-good temperature**. Through their presetting, they enable a **hydronic adjustment** of the heating water quantity and thus an **energy-efficient heat output** of the individual radiators. This means **hydronic balancing** ensures that all heating surfaces in your home are supplied evenly and thus energy-efficiently. This optimises your heating technology, saves money and protects the environment.

And that's just a **really good feeling**.
For you. For the climate. And for your wallet.

Just turn down the heat: Every degree counts!

It is worthwhile to simply turn down the heat – **because with every degree Celsius less, you save about 6 % heating energy!** Our modern thermostats help you and can also be easily retrofitted in existing buildings.

HOW THERMOSTATS WORK



With our modern thermostats, you can **comfortably regulate your desired temperature**. As soon as the desired temperature is reached, the thermostat closes automatically. When the temperature drops, it opens again. Our thermostats are scaled from 1 to 5 – these levels are **assigned to temperatures**. Level 3 corresponds to about 20 °C, the maximum level 5 to about 28 °C. That's why it's no use turning the thermostat to level 5 in a cool room – the room won't warm up any faster.

Uni LRH – the climate thermostat

Conscious heating. Save constantly.



Simply saving
energy



YOUR BENEFITS AT A GLANCE:

- + *Efficient* climate thermostat
- + *Prominent setting point for 19°C room temperature*, therefore also ideal for use in public buildings
- + *Timeless* design
- + *Optimal handling* due to an easy-to-read scale and palpable setting aids
- + *Limited to 21°C room temperature ex factory* – if required, the setting range can be further limited, blocked or extended up to a maximum setpoint of 28°C
- + *Memo disc* for marking a selected temperature setting

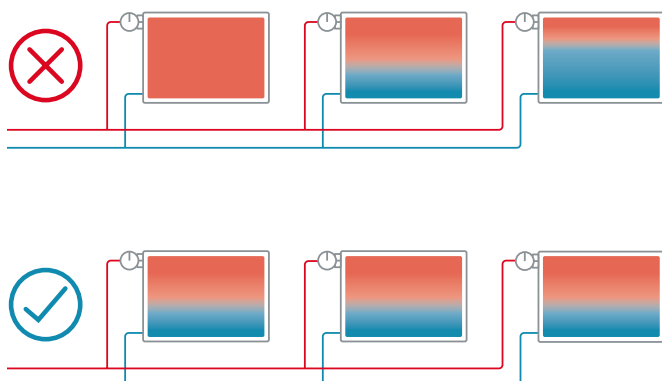


Good for the climate, good for your heating costs

Our contribution to
the energy turnaround

KEEPING YOUR ENERGY CONSUMPTION UNDER CONTROL?

No problem with our new Uni LRH thermostat. Thanks to *simple temperature control*, the balancing act between cost savings and desired temperature is easy for you. And it pays off: *with every degree less you save up to 6 % of the costs.*



Hydronic balancing of the heating system
ensures optimum heat distribution

EFFICIENT AND CLIMATE-FRIENDLY

Combine the Uni LRH with our thermostatic valves for *hydronic balancing*. This distributes the heat evenly across all your radiators – and *you quickly save up to 15 % on heating energy and costs.*

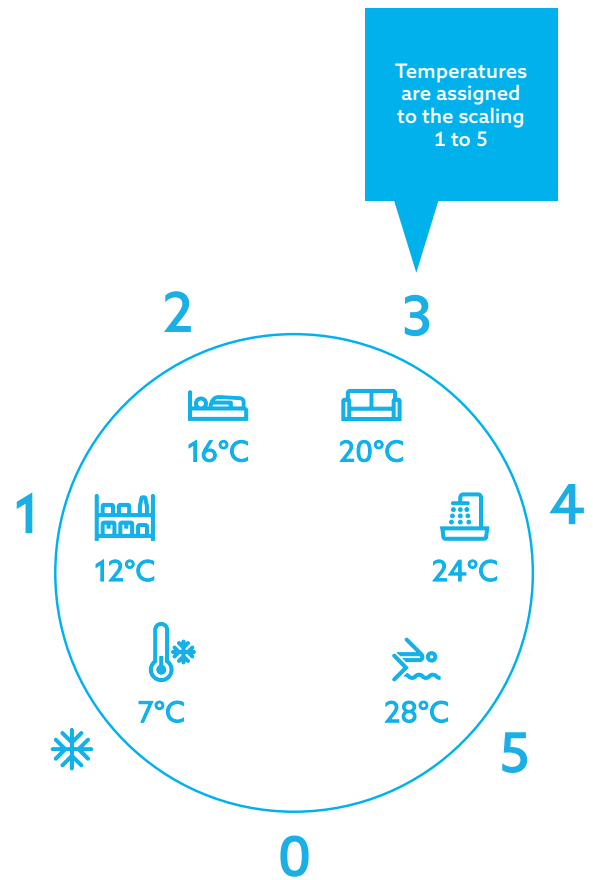
Uni L, Uni X and Uni F

Classic feed-good warmth elegantly controlled

TIMELESS ELEGANCE AND FUNCTIONALITY

- + Our Uni L and Uni X thermostat series impress with their *elegant and timeless design*.
- + The Uni L and Uni X radiator thermostats are equipped with a *memo disc* to mark a selected setting. This makes it easier for you to reset your desired temperature after turning the handwheel.
- + With *limiting elements* in or on the thermostat, you can easily limit or block the control range.
- + Handling and readability are *optimally coordinated*, the control behaviour is excellent.
- + *Palpable setting aids* help you to find the basic setting "3" again more easily. An *absolute plus* in unfavourable lighting conditions or for visually impaired persons.

Find out more at [orientaltrading.com/qr/thermostats](https://www.orientaltrading.com/qr/thermostats)



YOUR BENEFITS AT A GLANCE:



- + *No adapter* required
- + *Secure* fixing of the thermostat
- + *Easy* mounting
- + *Compact* size
- + *Elegant* and timeless design
- + *Limiting elements* and palpable setting aids
- + *Union nut cover* available as accessory
- + *Suitable* for valve bodies with connection thread M 30 x 1.5 (Uni LH / XH) or squeeze connection (Uni LD / XD)



Uni X thermostat



Excellent control
behaviour



Uni L thermostat

OUR TIP FOR NICHES

Thermostats must be able to “feel” the air in the room *without hindrance* in order to regulate properly and energy-efficiently. Especially in older buildings, heaters are often located in niches, under windowsills or behind curtains. This affects the accuracy of the thermostats. The solution is our Uni L and Uni X thermostats with *remote sensor* or our Uni F thermostats with *remote control*.



Uni L thermostat
with *remote sensor*



Uni F thermostat
with *remote control*

Uni SH

in modern slim design



Award-winning design

EXACTLY YOUR STYLE

Elegant and discreet, this is how our Uni SH presents itself – the smallest among our thermostats. However, in terms of function, excellent control behaviour, handling and readability, it is by no means overshadowed by its "big sisters".

With its *high-quality finish* and colour variations, the Uni SH will catch the eye in your living room and bathroom. The "*icing on the cake*" on your radiator.

YOUR BENEFITS AT A GLANCE:

- + *Modern* slim design
- + *Multiple award-winning* design thermostat
- + *Easy and precise* temperature setting
- + *Excellent* handling and readability
- + *Palpable* setting aids
- + *Elegant and discreet* colour variations
- + *Elegant SH-Caps* for covering the chrome plated union nut
- + *Suitable* for valve bodies with connection thread M 30 x 1.5



Elegant feel-good warmth discreetly controlled

ATTRACTIVE AND EASY TO HANDLE

- + The radiator thermostat Uni SH in modern slim design combines *attractive form with elegant function*.
- + The discreet contours on the handle sleeve *increase the ease of handling*.
- + Handling and readability are *optimally coordinated*, the control behaviour is excellent.
- + *Palpable setting aids* help you to find the basic setting "3" again more easily. An *absolute plus* in unfavourable lighting conditions or for visually impaired persons.



THE PERFECT APPEARANCE

In combination with our E thermostatic valves, the thermostats *match your design radiators perfectly*. The elegant thermostatic valves are available in angle, straight, reversed angle and double angle versions.

The valves with *easy-to-clean surfaces* are available in white powder coated, chrome plated, anthracite, gold plated and stainless steel finish.

Find all variants at [ventrop.com/qr/uni-sh](https://www.ventrop.com/qr/uni-sh)



Uni L special thermostats

Time to change



INVESTMENT IN ENERGY-SAVING CONTROLS

You want to *modernise your existing conventional radiators or radiators with integrated valve set* and *not compromise* on the energy efficiency and control behaviour of the thermostats? Then our *special thermostats* (with connection thread or squeeze connection) will make it easier for you to retrofit and modernise. The design, handling and control behaviour are identical to the standard thermostat range. Only the connection threads are *specially adapted to the valve bodies of other manufacturers*.

SPECIAL THERMOSTATS

Version	Colour	Connection thread	Suitable for thermostatic valves bodies of the companies	Item no.
Uni L	White	M 30 x 1.0	Oventrop, manufactured until 1998	1011401
Uni LK	White	M 28 x 1.0	Kosmia	1613501
Uni LA	White	M 28 x 1.5	Herz	1613401
Uni LI	White	M 32 x 1.0	Ista, manufactured from 1985	1616200
Uni LR	White	M 33 x 2.0	Rosswainer	1616301
Uni LM	White	M 38 x 1.5	Meges	1616100
Uni LO	White	M 38 x 1.5	Oreg (Ondal)	1616500
Uni LDV	White	Squeeze connection (Ø 26 mm)	Danfoss, series RAV	1616675
Uni LDVL	White	Squeeze connection (Ø 34 mm)	Danfoss, series RAVL	1616575
Uni LV	White	Squeeze connection	Vaillant, manufactured from 1981	1616001
Maxi / mini	White	M 40 x 1.5	Oventrop maxi/mini, manufactured until 1974	1015500

LOCKSHIELD MODELS

With concealed temperature setting, integrated anti-theft device and increased flexural strength (load up to 100 kg)

Version	Colour	Connection thread	Protection against vandalism	Item no.
Uni LHB	White	M 30 x 1.5	✓	1011410
Uni LDB	White	Squeeze connection	✓	1011440

CLIMATE THERMOSTAT

Limited to 21°C room temperature ex factory

Version	Colour	Connection thread	Item no.
Uni LRH	White	M 30 x 1.5	1011462

Radiator sets Uni LH and Uni SH

Precisely fitting and energy-efficient

IDEAL FOR MODERN DESIGN RADIATORS

To ensure that everything fits, we have put together **radiator sets** for our thermostats Uni LH and Uni SH. Each set includes all the components required to connect a radiator and control the room temperature in an energy-efficient manner.

Depending on the thermostatic valve, the **Uni LH** sets are suitable for **automatic** hydronic balancing or **manual** hydronic balancing.

The **Uni SH** sets are suitable for **manual** hydronic balancing.

Sets with Uni LH

UNI LH SETS

with AQ thermostatic valve and radiator lockshield valve

Consisting of	Version	Nominal size	Colour	Item no.
<ul style="list-style-type: none"> • AQ thermostatic valve • Combi 2 radiator lockshield valve • Uni LH thermostat 	Angle	DN 10	White	1703063
	Angle	DN 15	White	1703064
	Straight	DN 10	White	1703163
	Straight	DN 15	White	1703164



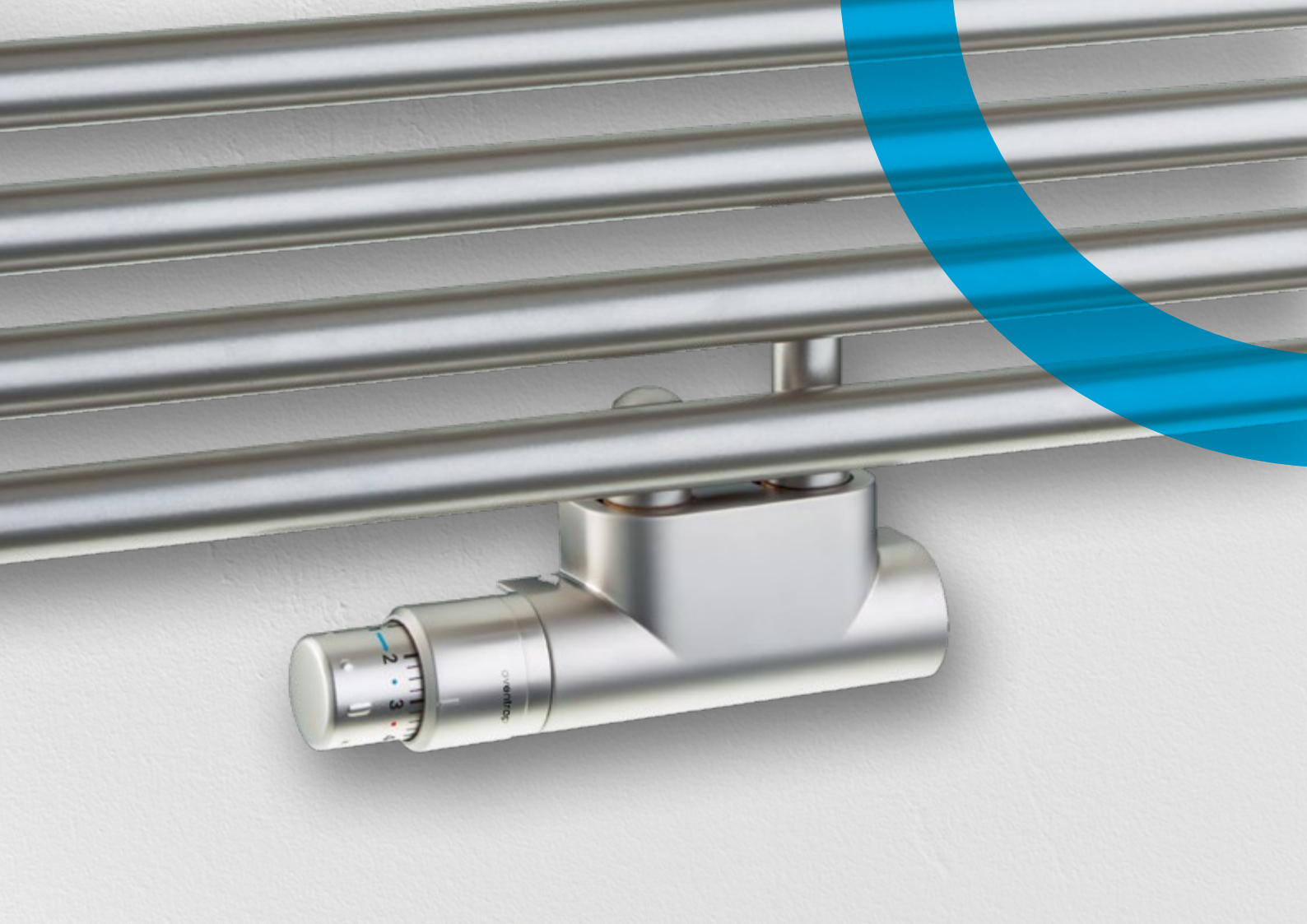
UNI LH SETS

with AV9 thermostatic valve and radiator lockshield valve

Consisting of	Version	Nominal size	Colour	Item no.
<ul style="list-style-type: none"> • AV9 thermostatic valve • Combi 2 radiator lockshield valve • Uni LH thermostat 	Angle	DN 10	White	1683703
	Angle	DN 15	White	1683704
	Straight	DN 10	White	1683803
	Straight	DN 15	White	1683804



Find all thermostats at [orientaltrading.com/qr/thermostats](https://www.orientaltrading.com/qr/thermostats)

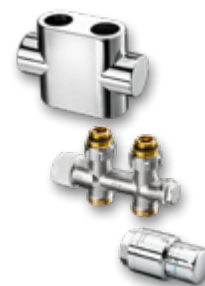


Sets with Uni SH

UNI SH SETS

with Multiblock T connection fitting for radiators

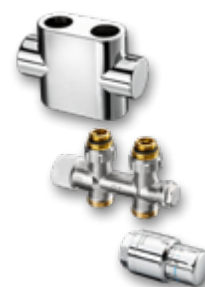
Consisting of	Version	Radiator connection	Colour	Item no.
<ul style="list-style-type: none"> • Multiblock T connection fitting • Design cover • Uni SH thermostat • SH-Cap 	Straight	G ½ IT	White / Chrome	1184183
	Straight	G ½ IT	Chrome	1184283
	Straight	G ½ IT	Stainless steel	1184383
	Angle	G ½ IT	White / Chrome	1184184
	Angle	G ½ IT	Chrome	1184284
	Angle	G ½ IT	Stainless steel	1184384

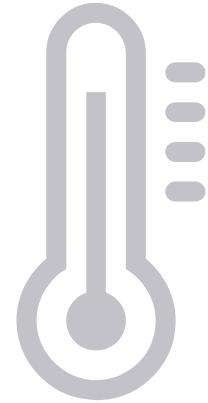


UNI SH SETS

with Multiblock TFU connection fitting for radiators

Consisting of	Version	Radiator connection	Colour	Item no.
<ul style="list-style-type: none"> • Multiblock TFU connection fitting • Design Abdeckung • Thermostat Uni SH • SH-Cap 	Pivoting	G ½ IT	White / Chrome	1184135
	Pivoting	G ½ IT	Chrome	1184235





UNI SH SETS

with Multiblock T-RTL connection fitting for radiators and surface temperature regulation

Consisting of	Version	Radiator connection	Colour	Item no.
<ul style="list-style-type: none"> • Multiblock T-RTL connection fitting • Design cover • Uni SH thermostat • SH-Cap 	Angle	G 1/2 IT	White / Chrome	1184188
	Angle	G 1/2 IT	Chrome	1184288



UNI SH SETS

with E thermostatic valve and radiator lockshield valve

Consisting of	Version	Nominal size	Colour	Item no.
<ul style="list-style-type: none"> • E thermostatic valve • Combi E radiator lockshield valve • Uni SH thermostat 	Angle	DN 15	Chrome	1164052
	Straight	DN 15	Chrome	1164152
	Double angle left	DN 15	Chrome	1164352
	Double angle right	DN 15	Chrome	1164452

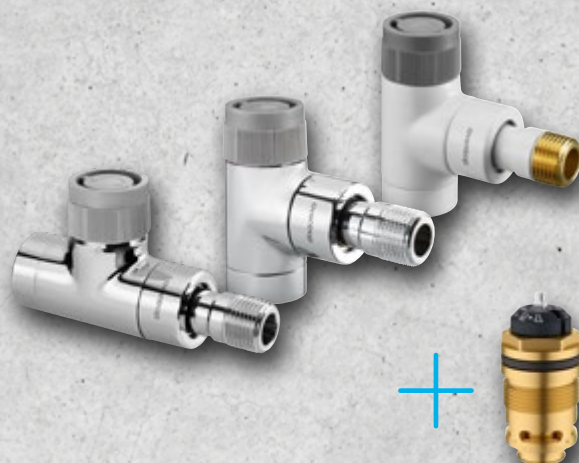


EQ thermostatic valves

Saving energy with design

Q-TECH MAKES THE DIFFERENCE

Our elegant **E** thermostatic valves with Q-Tech ensure that all radiators in your home are *supplied evenly* and that you have your desired temperature everywhere. *Quiet operation and energy savings of up to 15 %* are included. And all this without any complex calculations.



AUTOMATIC HYDRONIC BALANCING MAKES IT POSSIBLE

Our thermostatic valves with Q-Tech enable *automatic hydronic balancing*. They make it easier for you to adjust the volume flow to the respective consumer in heating and cooling systems. Q-Tech valves are ideal for *retrofitting and renovating* existing heating systems. Complex presetting calculations are not required.

The EQ thermostatic valves are available in *angle and straight* versions. The body of the valve is made of brass and the surface is chrome plated or white powder coated.

EQ THERMOSTATIC VALVES

Version	Nominal size	Surface	Connection thread	Operating temperature	Q-Tech	Item no.
EQ angle	DN 15	Chrome plated	M 30 x 1.5	2°C – 110°C	✓	1163552
EQ angle	DN 15	White powder coated	M 30 x 1.5	2°C – 90°C	✓	1163562
EQ straight	DN 15	Chrome plated	M 30 x 1.5	2°C – 110°C	✓	1163652
EQ straight	DN 15	White powder coated	M 30 x 1.5	2°C – 90°C	✓	1163662

Find all thermostatic valves with Q-Tech at qtech.oventrop.com



Download now
free of charge

Hydronic balancing? Quickly done – with OVplan.

You want to *document a hydronic balancing*?
With our OVplan design software you can do it easily:

- + **Simplified heating load calculation** according to DIN 12831 for existing buildings
- + **Pipework calculation** for heating, cooling and potable water
- + **Design of Regudis W** dwelling stations, surface heating and DIN radiators in existing and new buildings
- + **Output** of valve presetting values, pipe dimensioning, pump delivery heads, material lists and much more

Download OVplan now free of charge at oventrop.com/qr/ovplan



Room climate



Hydronics



Stations,
Storage cylinders



Potable water



Oil



Smart Home,
Smart Building

Oventrop is the partner for efficient heating, cooling and clean potable water. The modular systems and services offer pioneering solutions which all HVAC experts use to work with – easily and flexibly – from planning to installation, from industry to trade. As a family business, Oventrop accompanies all its partners over many years – competently and personally.