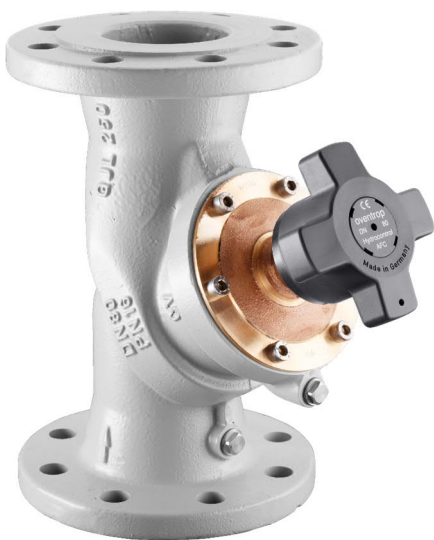


HydroControl A

Shutoff valve with flanges PN 16 DN 65...150



The HydroControl A is a shutoff valve for pipelines in heating and cooling systems.

It consists of a flow optimised Y-pattern body with flanges according to EN 1092-2, a valve insert with double O-ring sealing and an ergonomically designed handwheel as well as two connections for accessories, which are sealed with blind plugs as standard. All functions are accessible from the top.

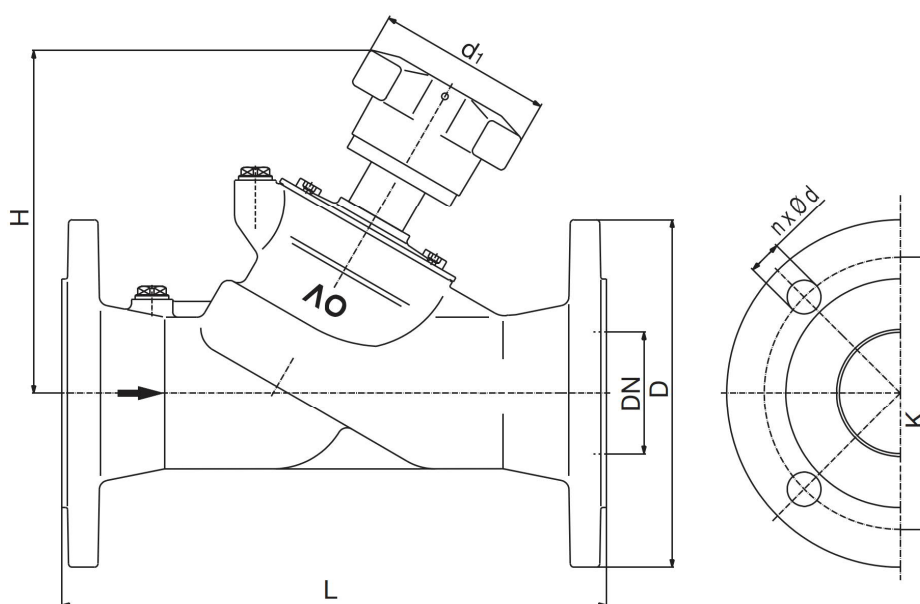
Technical Data

Nominal sizes	DN 65...150
Variants	With flanges according to EN 1092-2 PN 16
Operating temperature	-10...+150 °C
Operating pressure	PN 16
Medium	Heating and cooling water according to VDI 2035 or ÖNORM 5195 Water-glycol mixtures with max. 50% glycol content
Kvs values	98...404

Materials

Component	Nominal sizes	Material
Handwheel assembly	All	Polyamide plastic PA6
Body	All	Cast iron EN-GJL-250 according to EN 1561 (GG-25)
Bonnet	DN65...80 DN100...150	Cast iron EN-GJL-250 according to EN 1561 (GG-25) Bronze / cast iron EN-GJL-250 according to EN 1561 (GG-25)
Bonnet seal	All	2 x EPDM O-ring
Spindle	All	Dezincification resistant brass CW602
Spindle seal	All	2 x EPDM O-ring
Plug	DN65...80 DN100...150	Dezincification resistant brass CW602 Bronze
Seat seal	All	PTFE
Measuring valves	All	Dezincification resistant brass CW602

Dimensions and Item numbers



DN	Kvs	L [mm]	H [mm]	d1 [mm]	D [mm]	K [mm]	n x ØD	Weight [kg]	Item number
65	98	290	188	110	185	145	4 x 19	13	1062051
80	122	310	203	110	200	160	8 x 19	18	1062052
100	201	350	240	160	220	180	8 x 19	28	1062053
125	293	400	283	160	250	210	8 x 19	43	1062054
150	404	480	285	160	285	240	8 x 23	56	1062055

Accessories

Insulation shells



Made of polyurethane rigid foam with polystyrene shell. For heating and cooling systems. Building material class B2 according to DIN 4102. Meets the requirements of Appendix 8 to Sections 69 and 71 (1), line ee) of the German Building Energy Act (GEG).

Cold insulation: Min medium temperature. 6 °C, insulation shells have to be bonded hermetically. Restricted diffusion tightness at low medium temperature and at high ambient temperature and/or air humidity.

Suitable for

Item no.

DN 65

1062586

DN 80

1062587

DN 100

1062588

DN 125

1062589

DN 150

1062590

Spindle extension



Length 35 mm. For valve insulation with commercially available insulation material for HydroControl VTR, VFC, VFN, VFR, VGC, MTR, MFC and AFC. Not to be used in combination with Oventrop insulation shells.

Suitable for

Item no.

All nominal sizes

1688297

Fill and drain valve



Fill and drain ball valve PN 25, connection size G ¼ external thread, operating temperature up to 150 °C. Positioning upstream and/or downstream of the valve seat in exchange for the blind plugs fitted as standard.

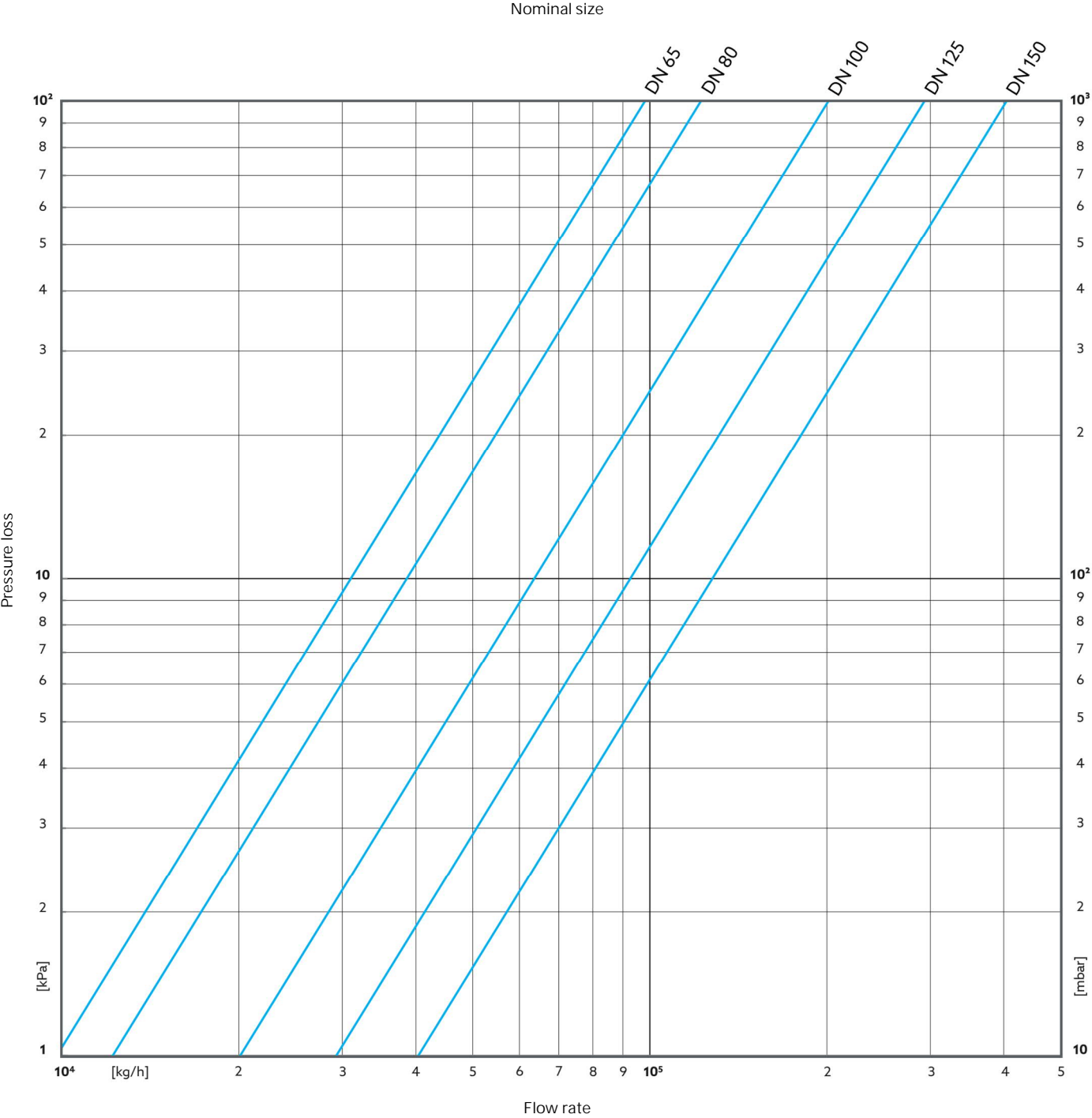
Suitable for

Item no.

All nominal sizes

1060191

Flow Chart



Kvs values

Nominal size	DN 65	DN 80	DN 100	DN 125	DN 150
Kvs value	98	122	201	293	404

Subject to changes • All rights reserved • © 2022 Oventrop GmbH & Co. KG
EN-03102-106205-DB-V2427 –July 2024



Oventrop GmbH & Co. KG • Paul-Oventrop-Strasse 1 • 59939 Olsberg • Germany
T +49 2962 820 • mail@oventrop.com • www.oventrop.com