

Oblique pattern valves PN 25

Application:

Central heating systems PN 25 especially district heating, e.g. transmission units, flow temperature up to 150 °C, bonnet secured against accidental release.

Tender specifications:

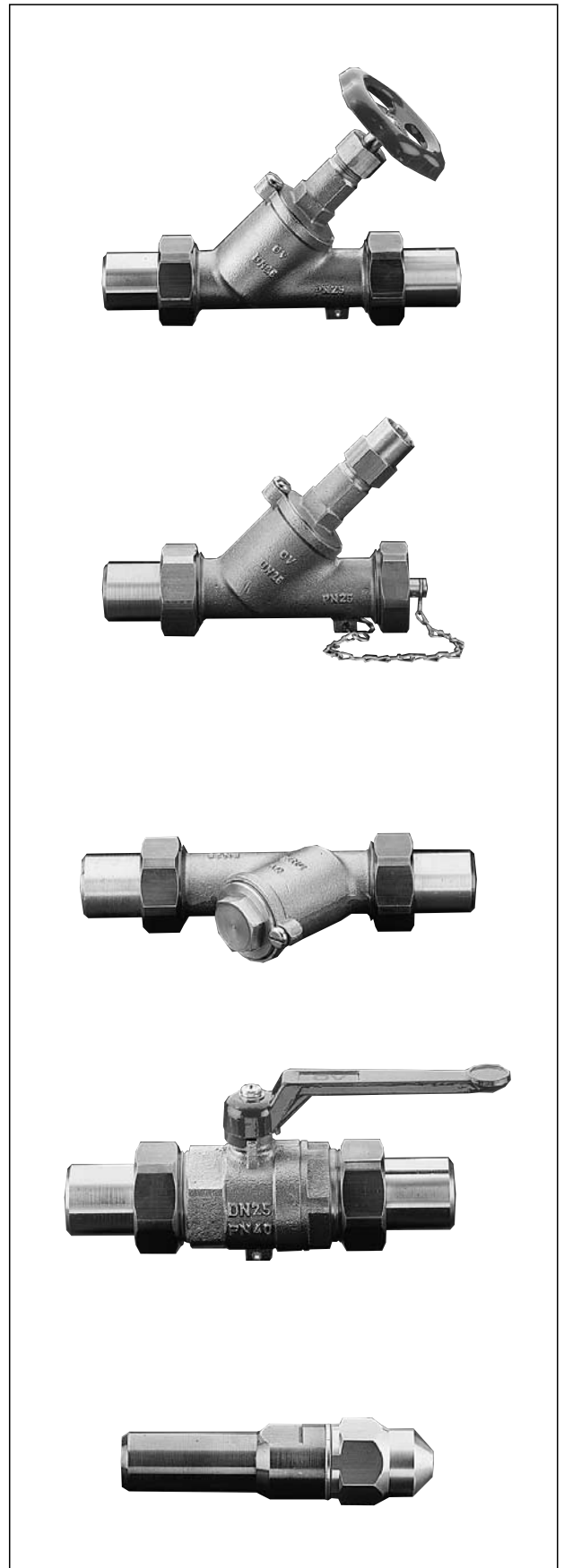
Oventrop oblique pattern globe valve PN 25, fluids up to 180°C, with flat sealing weldable tailpipes, bronze body, bonnet secured against accidental release, suitable for water; mineral-, heating- and hydraulic oils.

Oventrop oblique pattern drain valve PN 25, fluids up to 180 °C, one port with flat sealing weldable tailpipe, one port with cap with washer and chain, bronze body, bonnet secured against accidental release, suitable for water; mineral-, heating- and hydraulic oils.

Oventrop "Y" type strainer PN 25, fluids up to 180 °C, with flat sealing weldable tailpipes, bronze body, wire basket of stainless chromium steel, mesh size 0.6 mm, bonnet secured against accidental release, suitable for water; mineral-, heating- and hydraulic oils.

Oventrop ball valve PN 40, fluids up to 150 °C, with flat sealing weldable tailpipes, bronze body, chrome plated brass ball, PTFE ring gaskets, suitable for water; mineral-, heating- and hydraulic oils.

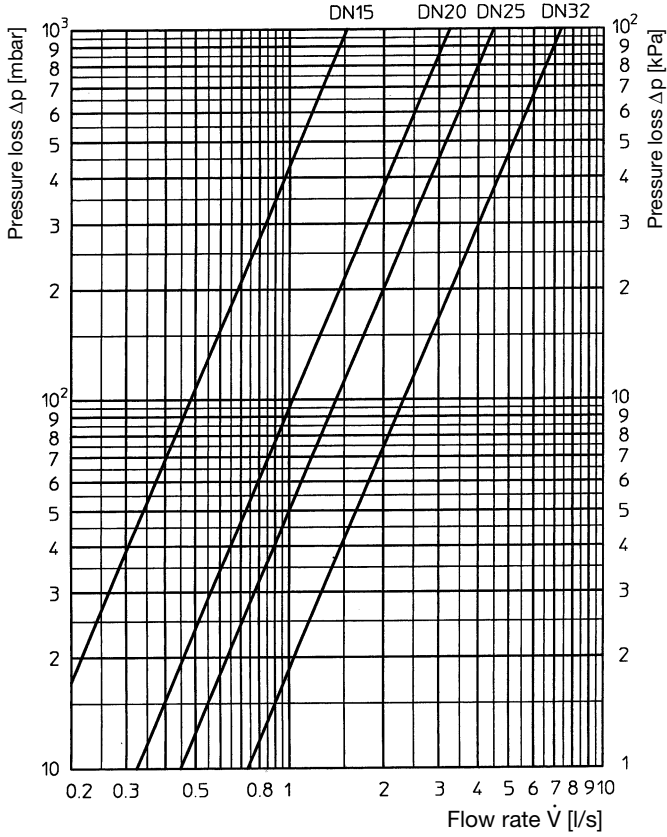
Oventrop steel airvent PN 25, fluids up to 180 °C, body made of weldable steel, stem made of dezincification resistant brass, suitable for water; mineral-, heating- and hydraulic oils.



Performance data:

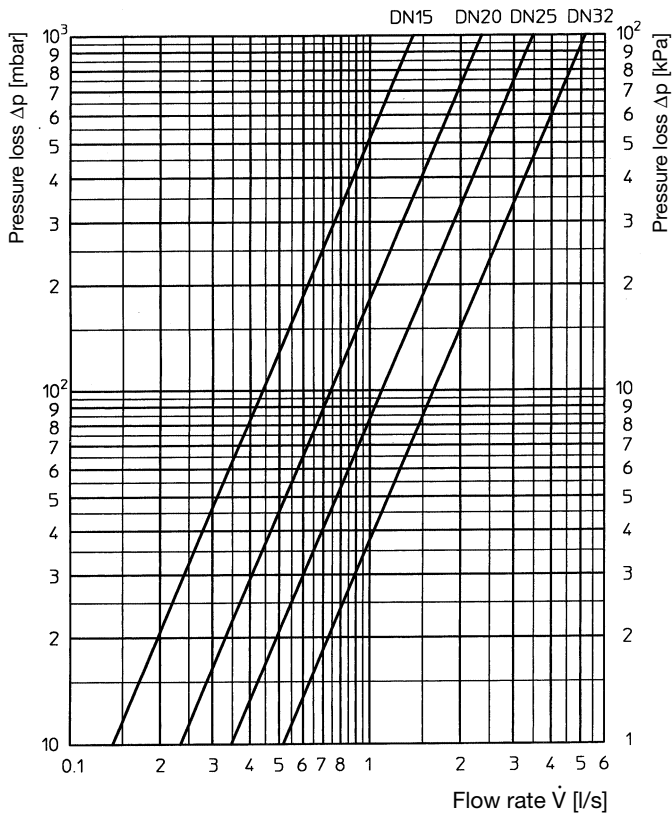
Flow chart 1

Oventrop oblique pattern globe valve

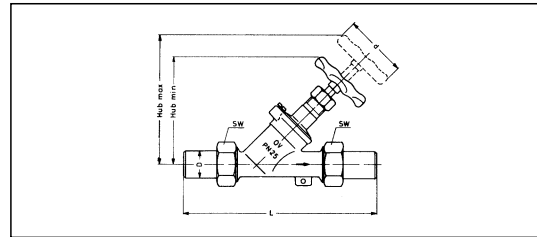


Flow chart 2

Oventrop "Y" type strainer



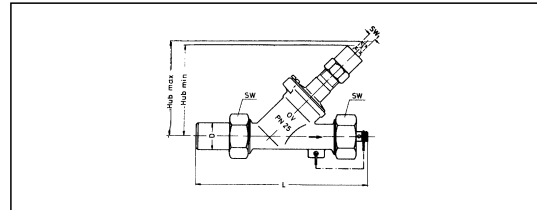
Dimensions:



DN	D	L	Lift min.	Lift max.	d	SW*	Item no.
15	20.5	194	110	125	60	30	106 50 04
20	26.5	204	132	150	80	37	106 50 06
25	33.5	244	136	160	80	46	106 50 08
32	42.5	260	160	185	90	58	106 50 10

as above but in lockshield configuration 106 51 04 - 10

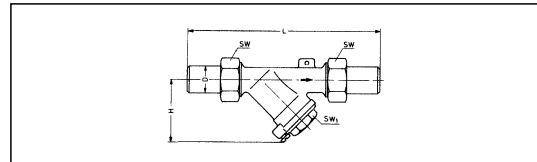
Oblique pattern globe valve



DN	D	L	Lift min.	Lift max.	SW*	SW1*	Item no.
15	20.5	157	82	85	30	7	106 61 04
20	26.5	167	96	96	37	8	106 61 06
25	33.5	197	100	108	46	8	106 61 08
32	42.5	214	118	120	58	10	106 61 10

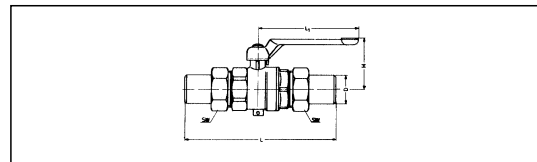
as above but with handwheel 106 60 04 - 10

Oblique pattern drain valve



DN	D	L	H	SW*	SW1*	Item no.
15	20.5	194	52	30	22	106 80 04
20	26.5	204	60	36	27	106 80 06
25	33.5	244	65	46	32	106 80 08
32	42.5	260	71	58	41	106 80 10

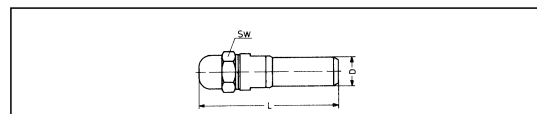
"Y" type strainer



DN	D	L	L1	H	SW*	Item no.
15	20.5	179	100	50	30	106 55 04
20	26.5	186	100	54	37	106 55 06
25	33	220	120	62	46	106 55 08
32	42.5	260	120	67	58	106 55 10

as above but one port with cap 106 65 04 - 10

Ball valve additional new model with extended handle



DN	D	L	SW*	Item no.
15	20	113	28	106 70 04

Airvent

* SW = spanner size

Subject to technical modification without notice.

Product range 5
ti 58-1/10/8.98/MW