

HydroControl A

Shutoff valves PN 25 / PN 16

DN 15...50



The HydroControl A is a shutoff valve for pipelines in heating and cooling systems. It consists of a flow optimised Y-pattern body, a valve insert with low pitch, double O-ring sealing and ergonomically designed handwheel as well as a HydroPort auxiliary valve. All functions are accessible from the top.

Functions

- Shutoff
- Connection for impulse tube
- Quick connection for the impulse tube of the HydroControl D differential pressure regulator
- Filling, draining and venting

Features

- + Reliable and robust design
- + All functions always included for easy connection
- + New HydroPort auxiliary valve for easy, quick and safe connection of accessories

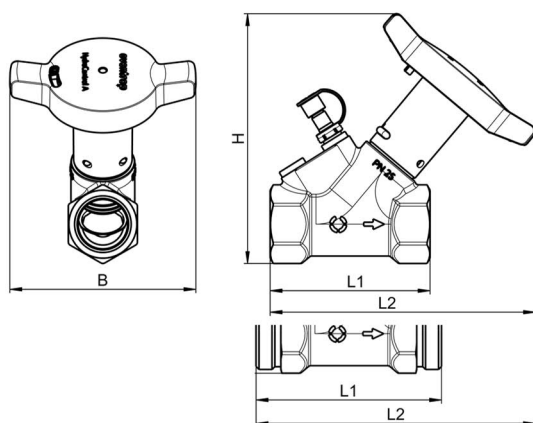
Product Details

Technical Data

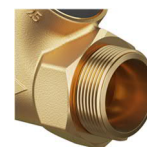
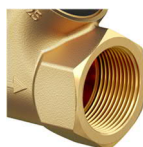
Nominal sizes	DN 15...50
Variants	With internal thread according to EN 10226 With external thread according to ISO 228
Operating temperature	-20...150 °C
Operating pressure	Internal thread: max. 25 bar / PN 25 External thread: max. 16 bar / PN 16
Medium	Heating and cooling water according to VDI 2035 or ÖNORM 5195 Water-glycol mixtures with max. 50% glycol content
Kvs values	4.1...49.8

Dimensions

DN	INTERNAL THREAD			EXTERNAL TRHEAD			B [mm]	H [mm]	Weight [kg]
	Conne- ction	L1 [mm]	L2 [mm]	Conne- ction	L1 [mm]	L2 [mm]			
15	Rp ½	72	142	G ¾	88	149	109	129	0.57
20	Rp ¾	84	152	G 1	93	154	109	136	0.67
25	Rp 1	98	160	G 1 ¼	109	164	109	147	0.99
32	Rp 1 ¼	116	172	G 1 ½	134	182	109	157	1.44
40	Rp 1 ½	124	177	G 1 ¾	144	187	109	164	1.80
50	Rp 2	155	195	G 2 ¾	166	204	109	184	3.10



Item Numbers



		INTERNAL THREAD		EXTERNAL THREAD	
DN	Kvs	Connection size	Item no.	Connection size	Item no.
15	4.1	Rp ½	1067524	G ¾	1067624
20	7.8	Rp ¾	1067526	G 1	1067626
25	14.1	Rp 1	1067528	G 1 ¼	1067628
32	24.8	Rp 1 ¼	1067530	G 1 ½	1067630
40	32.4	Rp 1 ½	1067532	G 1 ¾	1067632
50	49.8	Rp 2	1067536	G 2 ¾	1067636

Accessories

HydroPort adapter



With external thread G ¾.
For connecting accessories to HydroPort auxiliary valves.
Also suitable for permanent connection, e.g. for impulse tubes of third-party controllers. This adapter is not required for connecting the impulse tube of the HydroControl D.

Suitable for

All nominal sizes

Item no.

1069601

Insulation shells



Only for heating systems. Meets the requirements of Appendix 8 to section 69 and 71 (1), line ee) of the German Building Energy Act (GEG). Building material class B2 according to DIN 4102 / E according to EN 13501-1.
Operating temperature up to 110 °C.

Suitable for

Item no.

DN 15

1069610

DN 20

1069611

DN 25

1069612

DN 32

1069613

DN 40

1069614

DN 50

1069615

Fittings



Connection set with externally threaded tailpipes.
Consisting of two tailpipes, unions, nuts and sealing rings.
Suitable for HydroControl A with external threads.

Size

Suitable for

Item no.

R ½

DN 15

1140792

R ¾

DN 20

1140793

R 1

DN 25

1140794

R 1 ¼

DN 32

1140795

R 1 ½

DN 40

1140796

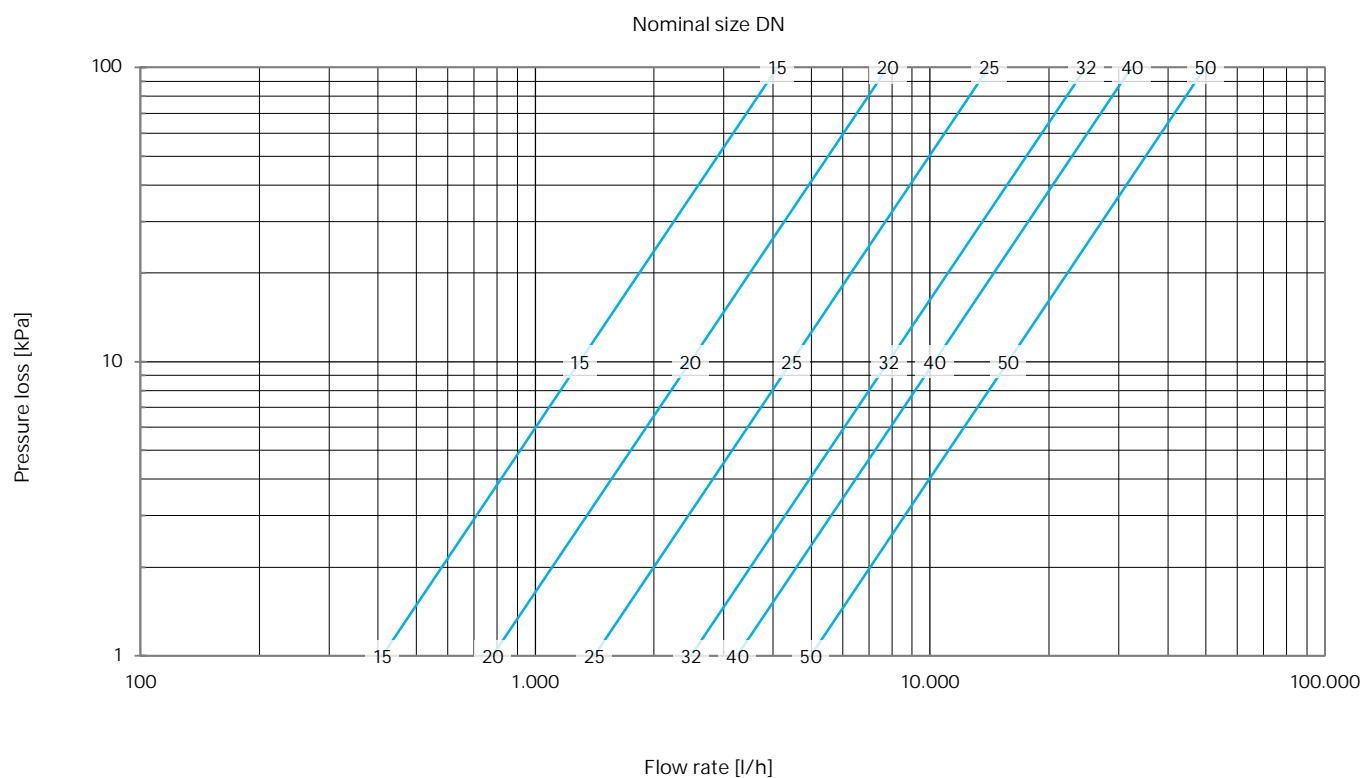
R 2

DN 50

1140797

Sizing

Flow Chart



Kvs values

DN 15	DN 20	DN 25	DN 32	DN 40	DN 50
4.1	7.8	14.1	24.8	32.4	49.8

Subject to changes • All rights reserved • © 2021 Oventrop GmbH & Co. KG
EN-03123-106752-DB-V2328 – July 2023