

## Regumat stations

For flexible and reliable heating.

# Our Regumat stations

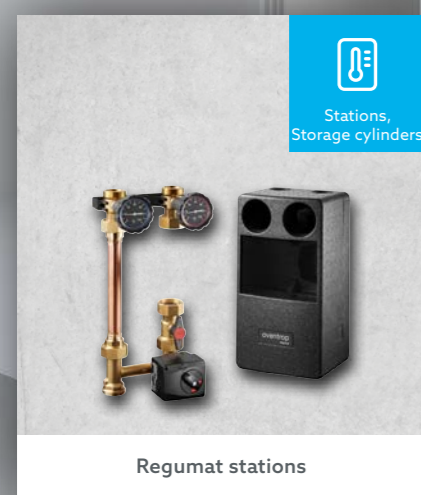
How to control the heating of tomorrow?  
That is quite simple with our modular solutions.



Together *we solve today the challenges of tomorrow*. As a partner at your side we support you. With our modular and pioneering system solutions, you are flexible and well positioned for the future. Even if the requirements change tomorrow. Our *stations and storage cylinders* are matched to our pioneering hydraulic and room climate solutions. So that you can plan reliably and systematically.

## FLEXIBLE AND RELIABLE HEATING WITH OUR STATIONS

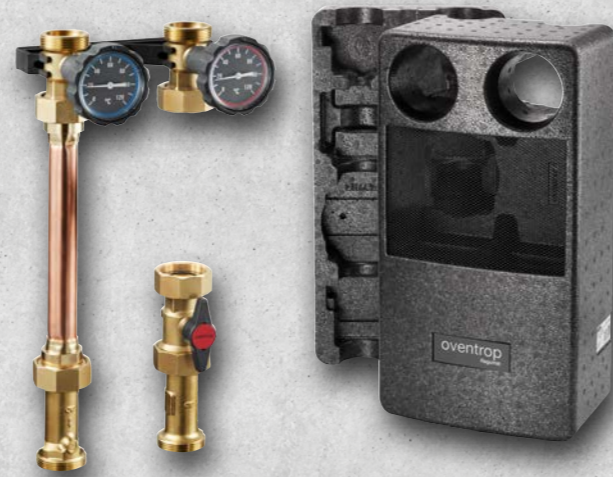
Oventrop stations are the *reliable "control centre"* in heating systems. Like our Regumat stations for heating circuits and our Regumat stations for solid fuel boilers: The connection groups are made of brass or bronze and are very durable. Therefore, you can be sure that everything will work perfectly, for a long time. A groundbreaking feature is that you can extend the system modularly, for example by adding a heating circuit controller.





# Regumat S stations

## for unmixed heating circuits



Time-saving installation, as pre-assembled



Space-saving installation due to compact design



High functional reliability due to maintenance-free components and high-quality materials



Simple modular extension with accessories

### WITH THESE STATIONS YOU CONNECT AN UNMIXED HEATING CIRCUIT.

The stations contain all components you need to connect the heat generator, pump and pipework. With the **Regumat S stations** you can shut off the heating circuit on the supply and return side. You can change the supply and return individually on site.

### THE STATIONS CONSIST OF:

- + a **shutoff device** with two ball valves to shut off the heating circuit
- + two **thermometers** integrated in the handles to display the flow and return temperature
- + a **check valve** to prevent incorrect circulation
- + a **thermal insulation**

Depending on the version, a pump ball valve is also included. This makes it easy for you to change the pump, because you do not have to drain system parts.



## Regumat S-130



### REGUMAT S-130 DN 20

- i** Pump length 130 mm
- Connection heat generator G 1 external thread, flat sealing
- Connection heating circuit G 1 external thread, flat sealing
- Recommended application\* 42 kW

Item no.	Pump type
1355051	without pump
1355057	Grundfos ALPHA 2.1 15-60
1355059	Wilo-Stratos PICO 15/1-6



### REGUMAT S-130 DN 25

- i** Pump length 130 mm
- Connection heat generator G 1½ external thread, flat sealing
- Connection heating circuit G 1½ external thread, flat sealing
- Recommended application\* 50 kW

Item no.	Pump type
1355071	without pump

## Regumat S-180 DN 25

### REGUMAT S-180 DN 25 WITH PUMP BALL VALVE



- i** Pump length 180 mm
- Connection heat generator G 1½ external thread, flat sealing
- Connection heating circuit G 1½ external thread, flat sealing
- Recommended application\* 50 kW

Item no.	Pump type
1357070	without pump
1357072	Wilo PARA 25-180/6-43/SC-6
1357073	Grundfos ALPHA 2.1 25-60

### REGUMAT S-180 DN 25 COMPACT DESIGN



- i** Pump length 180 mm
- Connection heat generator G 1½ external thread, flat sealing
- Connection heating circuit G 1½ external thread, flat sealing
- Recommended application\* 50 kW

Item no.	Pump type
1357020	without pump
1357027	Grundfos ALPHA 2.1 25-60
1357029	Wilo-Stratos PICO 25/1-6

## Regumat S-180 DN 32

### REGUMAT S-180 DN 32 WITH PUMP BALL VALVE



- i** Pump length 180 mm
- Connection heat generator G 2 external thread, flat sealing
- Connection heating circuit G 2 external thread, flat sealing
- Recommended application\* 70 kW

Item no.	Pump type
1355075	without pump
1355076	Grundfos ALPHA 2.1 32-60
1355079	Wilo-Stratos PICO plus 30/1-6

### REGUMAT S-180 DN 32 PLUS WITH PUMP BALL VALVE



- i** Pump length 180 mm
- Connection heat generator G 2 external thread, flat sealing
- Connection heating circuit G 2 external thread, flat sealing
- Recommended application\* 190 kW

Item no.	Pump type
1355070	without pump
1355080	Grundfos MAGNA3 32-100
1355081	Wilo-Stratos 30 1-10

## Regumat S-220 / 280

### REGUMAT S-220 DN 40



- i** Pump length 220 mm
- Connection heat generator G 2 external thread, flat sealing
- Connection heating circuit G 2 internal thread
- Recommended application\* 200 kW

Item no.	Pump type
1358240	without pump
1358251	Wilo Stratos Maxo 40/0,5-8
1358252	Grundfos MAGNA3 40-100F

### REGUMAT S-280 DN 50



- i** Pump length 280 mm
- Connection heat generator G 2 external thread, flat sealing
- Connection heating circuit G 2 internal thread
- Recommended application\* 200 kW

Item no.	Pump type
1358540	without pump
1358551	Wilo-Stratos 50/1-12
1358252	Grundfos MAGNA3 50-120F



# Regumat M3 stations for mixed heating circuit



Time-saving installation, as pre-assembled



Space-saving installation due to compact design



High functional reliability due to maintenance-free components and high-quality materials



Simple modular extension with accessories

## WITH THESE STATIONS YOU CONNECT A MIXED HEATING CIRCUIT.

The stations contain all components you need to connect the heat generator, pump and pipework. With the **Regumat M3 stations** you can shut off the heating circuit on the supply and return side. You can change the supply and return individually on site.

## THE STATIONS CONSIST OF:

- + a **shutoff device** with two ball valves to shut off the heating circuit
- + two **thermometers** integrated in the handles to display the flow and return temperature
- + a **check valve** to prevent incorrect circulation
- + a **three-way mixing valve** with actuator
- + a **thermal insulation**

Depending on the version, a pump ball valve is also included. This makes it easy for you to change the pump, because you do not have to drain system parts.

## REGUMAT M3 DN 25 AND REGUMAT M3 DN 25 - COMPACT DESIGN: THREE-WAY MIXING VALVE WITH ACTUATOR

- + **Optimum control accuracy** due to equal-percentage mixing of the volume flows
- + **No temperature fluctuations** with changing volume flows in partial load operation



## Regumat M3-130



### REGUMAT M3-130 DN 20

- i** Pump length 130 mm
- Connection heat generator G 1 external thread, flat sealing
- Connection heating circuit G 1 external thread, flat sealing
- Recommended application\* 37 kW

Item no.	Pump type
1355251	without pump
1355257	Grundfos ALPHA 2.1 15-60
135259	Wilo-Stratos PICO 15/1-6



### REGUMAT M3-130 DN 25

- i** Pump length 130 mm
- Connection heat generator G 1½ external thread, flat sealing
- Connection heating circuit G 1½ external thread, flat sealing
- Recommended application\* 40 kW

Item no.	Pump type
1355271	without pump

## Regumat M3-180 DN 25



### REGUMAT M3-180 DN 25 WITH PUMP BALL VALVE

- i** Pump length 180 mm
- Connection heat generator G 1½ external thread, flat sealing
- Connection heating circuit G 1½ external thread, flat sealing
- Recommended application\* 40 kW

Item no.	Pump type
1357265	without pump and without actuator
1357270	without pump
1357272	Wilo PARA 25-180/6-43/SC-6
1357273	Grundfos ALPHA 2.1 25-60



### REGUMAT M3-180 DN 25 COMPACT DESIGN

- i** Pump length 180 mm
- Connection heat generator G 1½ external thread, flat sealing
- Connection heating circuit G 1½ external thread, flat sealing
- Recommended application\* 40 kW

Item no.	Pump type
1357220	without pump
1357227	Grundfos ALPHA 2.1 25-60
1357229	Wilo-Stratos PICO 25/1-6



## Regumat M3-180 DN 32

### REGUMAT M3-180 DN 32 WITH PUMP BALL VALVE

- i** Pump length 180 mm
- Connection heat generator G 2 external thread, flat sealing
- Connection heating circuit G 2 external thread, flat sealing
- Recommended application\* 65 kW

Item no.	Pump type
1355275	without pump
1355276	Grundfos ALPHA 2.1 32-60
1355279	Wilo-Stratos PICO plus 30/1-6



### REGUMAT M3-180 DN 32 PLUS WITH PUMP BALL VALVE

- i** Pump length 180 mm
- Connection heat generator G 2 external thread, flat sealing
- Connection heating circuit G 2 external thread, flat sealing
- Recommended application\* 110 kW

Item no.	Pump type
1355270	without pump
1355280	Grundfos MAGNA3 32-100
1355281	Wilo-Stratos 30 1-10

## Regumat M3-220 / 280



### REGUMAT M3-220 DN 40

- i** Pump length 220 mm
- Connection heat generator G 2 external thread, flat sealing
- Connection heating circuit G 2 internal thread
- Recommended application\* 175 kW

Item no.	Pump type
1358340	without pump
1358351	Wilo Stratos Maxo 40/0,5-8
1358352	Grundfos MAGNA3 40-100F



### REGUMAT M3-280 DN 50

- i** Pump length 280 mm
- Connection heat generator G 2 external thread, flat sealing
- Connection heating circuit G 2 internal thread
- Recommended application\* 175 kW

Item no.	Pump type
1358640	without pump
1358651	Wilo Stratos Maxo 50/0,5-12
1358652	Grundfos MAGNA3 50-120F



# Regumat F stations

for heating circuits with  
fixed value control



Time-saving installation, as pre-assembled



Space-saving installation due to compact design



High functional reliability due to maintenance-free components and high-quality materials



Simple modular extension with accessories

## WITH THESE STATIONS YOU CONNECT A THERMALLY CONTROLLED HEATING CIRCUIT.

The stations control and limit the flow temperature in combined radiator/surface heating systems. The stations contain all components you need to connect the heat generator, pump and pipework. With the **Regumat F stations** you can shut off the heating circuit on the supply and return side.

## THE STATIONS CONSIST OF:

- + a **shutoff device** with two ball valves to shut off the heating circuit
- + two **thermometers** integrated in the handles to display the flow and return temperature
- + a **check valve** to prevent incorrect circulation
- + a **three-way mixing valve** with temperature controller
- + a **thermal insulation**

Depending on the version, a pump ball valve is also included. This makes it easy for you to change the pump, because you do not have to drain system parts.



## Regumat F-130



### REGUMAT F-130 DN 25

<b>i</b>	Pump length	130 mm
	Connection heat generator	G 1½ external thread, flat sealing
	Connection heating circuit	G 1½ external thread, flat sealing
	Recommended application*	15 kW
	Temperature control range	20–50 °C

Item no.	Pump type
1354171	without pump

## Regumat F-180



### REGUMAT F-180 DN 25 WITH PUMP BALL VALVE

<b>i</b>	Pump length	180 mm
	Connection heat generator	G 1½ external thread, flat sealing
	Connection heating circuit	G 1½ external thread, flat sealing
	Recommended application*	15 kW
	Temperature control range	20–50 °C

Item no.	Pump type
1354270	without pump
1354272	without pump and without temperature controller
1354274	Grundfos ALPHA 2.1 25-60
1354276	Wilo-Stratos PICO 25/1-6



### REGUMAT F-180 DN 25

<b>i</b>	Pump length	180 mm
	Connection heat generator	G 1½ external thread, flat sealing
	Connection heating circuit	G 1½ external thread, flat sealing
	Recommended application*	15 kW
	Temperature control range	20–50 °C

Item no.	Pump type
1354070	without pump

## Regumat FR-180



### REGUMAT FR-180 DN 25

<b>i</b>	Pump length	180 mm
	Connection heat generator	G 1½ external thread, flat sealing
	Connection heating circuit	G 1½ external thread, flat sealing
	Recommended application*	15 kW
	Temperature control range	20–50 °C

Item no.	Pump type
1354087	Grundfos ALPHA 2.1 25-60N
1354097	Wilo-Stratos PICO plus 25/1-6 N

## Regumat MF-180



### REGUMAT MF-180 DN 25 WITH PUMP BALL VALVE AND ELECTRONIC FIXED FLOW TEMPERATURE VALUE CONTROL

<b>i</b>	Pump length	180 mm
	Connection heat generator	G 1½ external thread, flat sealing
	Connection heating circuit	G 1½ external thread, flat sealing
	Recommended application*	40 kW
	Temperature control range	0–95 °C

Item no.	Pump type
1354260	without pump



# Regumat RTA stations for solid fuel boilers



Time-saving installation, as pre-assembled



Space-saving installation due to compact design



High functional reliability due to maintenance-free components and high-quality materials



Simple modular extension with accessories

## WITH THESE STATIONS YOU CONNECT A SOLID FUEL BOILER.

The return temperature to the solid fuel boiler is at least approx. 55 °C and thus above the dew point. It prevents condensate tar formation. During start-up mode, the boiler circuit is short circuited. Hot supply water is fed to the return flow via the bypass. When the return temperature of 55 °C is reached, the mixing valve opens.

## THE STATIONS CONSIST OF:

- + a *shutoff device* with two ball valves to shut off the heating circuit
- + two *thermometers* integrated in the handles to display the flow and return temperature
- + a *check valve* to prevent incorrect circulation
- + a *three-way mixing valve* with temperature controller
- + a *thermal insulation*



## Regumat RTA-130



### REGUMAT RTA-130 VR DN 25 WITH SUPPLY ON THE RIGHT HAND SIDE

<b>i</b>	Pump length	130 mm
	Connection heat generator	G 1½ external thread, flat sealing
	Connection heating circuit	G 1½ external thread, flat sealing
	Recommended application*	30 kW
	Temperature control range	40–70 °C

Item no.	Pump type
1354795	Wilo PARA 25-130/6-43/SC-9



### REGUMAT RTA-130 VL DN 25 WITH SUPPLY ON THE LEFT HAND SIDE

<b>i</b>	Pump length	130 mm
	Connection heat generator	G 1½ external thread, flat sealing
	Connection heating circuit	G 1½ external thread, flat sealing
	Recommended application*	30 kW
	Temperature control range	40–70 °C

Item no.	Pump type
1354798	Wilo PARA 25-130/6-43/SC-3



### REGUMAT RTA-130 TOP DN 25 WITH CONNECTION FROM THE TOP

<b>i</b>	Pump length	130 mm
	Connection heat generator	G 1½ external thread, flat sealing
	Connection heating circuit	G 1½ external thread, flat sealing
	Recommended application*	30 kW
	Temperature control range	40–70 °C

Item no.	Pump type
1354783	Wilo PARA 25-130/6-43/SC-3

## Regumat RTA-180



### REGUMAT RTA-180 DN 25

<b>i</b>	Pump length	180 mm
	Connection heat generator	G 1½ external thread, flat sealing
	Connection heating circuit	G 1½ external thread, flat sealing
	Recommended application*	30 kW
	Temperature control range	40–70 °C

Item no.	Pump type
1354692	without pump
1354691	Wilo PARA 25-180/6-43/SC-6



### REGUMAT RTA-180 DN 25 WITH UNIVERSAL THERMAL INSULATION OF MODULAR CONSTRUCTION

<b>i</b>	Pump length	180 mm
	Connection heat generator	G 1½ external thread, flat sealing
	Connection heating circuit	G 1½ external thread, flat sealing
	Recommended application*	30 kW
	Temperature control range	40–70 °C

Item no.	Pump type
1354580	without pump
1354587	Wilo PARA 25-180/6-43/SC-6



### REGUMAT RTAF-180 DN 25 WITH PUMP BALL VALVE AND ELECTRONIC FIXED VALUE CONTROL (RETURN TEMPERATURE INCREASE)

<b>i</b>	Pump length	180 mm
	Connection heat generator	G 1½ external thread, flat sealing
	Connection heating circuit	G 1½ external thread, flat sealing
	Recommended application*	40 kW
	Temperature control range	0–95 °C

Item no.	Pump type
1354560	without pump



### REGUMAT RTA-180 DN 32

<b>i</b>	Pump length	180 mm
	Connection heat generator	G 2 external thread, flat sealing
	Connection heating circuit	G 2 external thread, flat sealing
	Recommended application*	35 kW
	Temperature control range	40–70 °C

Item no.	Pump type
1354571	Wilo PARA 30-180/6-43/SC-9



## Modular accessories

### Clever combination



+ Heat exchanger with safety group set



+ Heat meter installation set



+ Distributor for Regumat DN 25



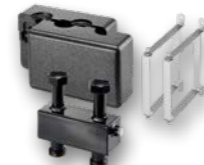
+ Modular distributor for Regumat DN 25



+ Distributor for Regumat DN 40/50



+ HydroFixx hydraulic separator/distributor combination for Regumat DN 25



+ MonoFixx for Regumat DN 25



+ HydroFixx hydraulic separator/distributor combination for Regumat DN 40/50



+ Regtronic RH heating circuit controller



+ Regtronic EM extension module



## Regtronic

### Weather-compensated control of the heating flow temperature

#### REGTRONIC RH HEATING CIRCUIT CONTROLLER

Weather-compensated control of the heating flow temperature via the demand of a heat generator and/or a mixing valve (e.g. Regumat M3 with three-way mixing valve).

The heating circuit controller can control a *mixed* and an *unmixed* heating circuit with heat demand. It can optionally be extended to six mixed and six unmixed heating circuits.

#### REGTRONIC EM EXTENSION MODULE

For extending the Regtronic RH heating circuit controller by six sensor inputs and five relay outputs. Thus, further mixed and unmixed heating circuits can be controlled.

Up to five extension modules can be connected to the Regtronic RH heating circuit controller. A PT 1000 pipe contact sensor is included in the scope of delivery.

#### ADVANTAGES OF THE REGTRONIC RH



- + *Different control modes* of the heating circuits possible: weather, fixed value and room temperature
- + Schematically preprogrammed *standard applications* and numerous *optional functions*
- + *Modularly extendable* with up to five Regtronic EM





# Achieve more? Together we can do it!

Whether you are working with our products for the first time, need support with the design or help with a complex installation on site – we are there for you *flexibly and reliably*. As your *long-term partner and personal problem solver*. We make your working day easier and give you the support you need! Find out more at [service.ointrop.com](https://service.ointrop.com)

#### SUPPORT DURING COMMISSIONING

The system is already installed, but you need *help with commissioning*? We can help with that too. Especially with complex systems and initial programming, you can save valuable time.



In addition to *personal support on site*, you can also *prepare* you projects *digitally* with Oventrop.

#### EASILY CARRY OUT DESIGNS AND CALCULATIONS ONLINE



With our online design:  
[ointrop.com/qr/goregumat](https://ointrop.com/qr/goregumat)





Room climate



Hydronics



Stations,  
Storage cylinders



Potable water



Oil



Smart Home,  
Smart Building

Oventrop is the partner for efficient heating, cooling and clean potable water. The modular systems and services offer pioneering solutions which all HVAC experts use to work with – easily and flexibly – from planning to installation, from industry to trade. As a family business, Oventrop accompanies all its partners over many years - competently and personally.