



Non contractual pictures



## Para Z BZ15-130/7-50/SC

The OEM Solution for sanitary applications.

### Construction

Glandless circulation pump with either a bronze, a composite or a stainless steel pump housing and threaded connection. High-efficiency motor with automatic power adjustment and self-protecting modes.

Mechanical design dedicated to sanitary applications.

### Type key

Example:	Para Z BZ15-130/7-50/SC-12
<b>Para</b>	Electronically controlled high-efficiency pump. Pump range adapted to requirements of the OEM market.
<b>Z</b>	Dedicated to sanitary applications
<b>BZ</b>	BZ = Inline bronze pump housing KU = Inline composite pump housing N = Inline stainless steel pump housing
<b>15-130</b>	Nominal diameter - Pump housing length
<b>7-50</b>	Nominal delivery head range [m] - Power consumption
<b>SC</b>	SC = self controlled pump ; $\Delta p-v$ , $\Delta p-c$ , constant speed I, II, III iPWM = the pump is controlled by an external system via iPWM signal
<b>12</b>	Position of electronic module

### Your advantages

- A large range of specific pump housings with bronze, stainless steel or composites for the use in sanitary applications
- Easy installation thanks to a front access to the signal connector and screws
- High system protection due to integrated functionalities such as manual restart as well as reset to factory settings

#### Technical data (type)

##### Approved liquids (other liquids upon request)

Drinking water and water for food-processing companies in accordance with TrinkwV 2001 (Drinking water ordinance)	Yes
Min. fluid temperature $T_{min}$	3 °C
Max. fluid temperature $T_{max}$	85 °C
Min. ambient temperature $T_{min}$	-5.0 °C
Max. ambient temperature $T_{max}$	70.0 °C
Maximum operating pressure $P_N$	10 bar

##### Min. suction head (to avoid cavitation at suction port at water pumping temperature)

Minimum suction head at 50 °C $m$	0.5 m
Minimum suction head at 95 °C $m$	4.5 m

##### Motor data

Mains connection	1~230V +10/-15%, 50/60Hz
------------------	--------------------------

Pump operation in high ambient / fluid temperature may affect hydraulic performance. For further information please contact Wilo.

#### Technical data (type)

Approvals and markings	CE / Drinking water ordinance : compliant / EAC / UA
Insulation class	F
Motor protection	integrated
Power consumption $P_{1 min}$	6 W
Power consumption $P_{1 max}$	50 W
Max current $I_{max}$	0.44 A
Protection class	IPX4D
Power consumption in standby mode $P_1$	≤ 0.5 W

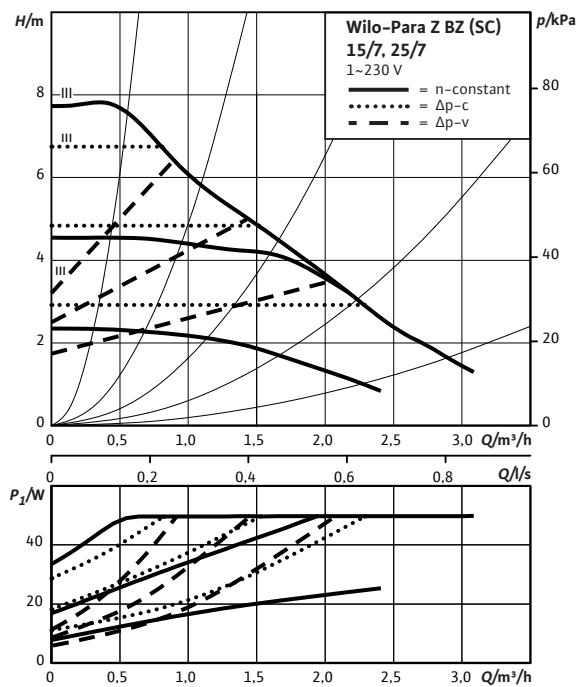
##### Materials

Pump housing	Bronze
Impeller	PPO-GF30
Shaft	Stainless steel
Bearing	Carbon

Pump operation in high ambient / fluid temperature may affect hydraulic performance. For further information please contact Wilo.

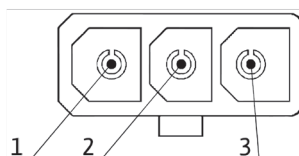
#### Pump curve

Wilo-Para Z BZ 15/7, 25/7



#### Connector diagram

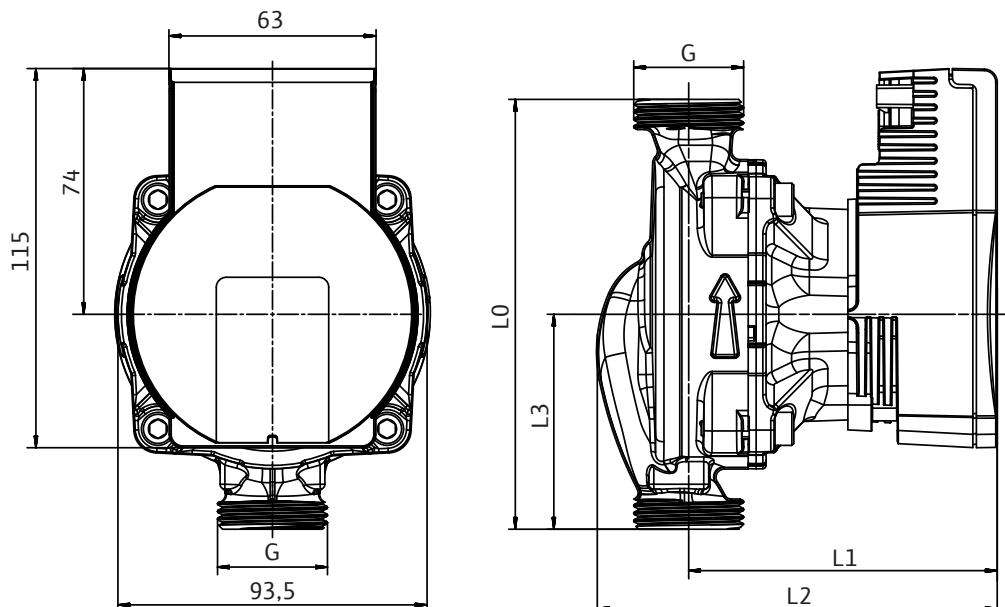
Power - Integrated 3-way connector type Molex 5025-03 for plug Facon PR60 or equivalent



1. L
2. Neutral
3. PE

## Dimension drawing (variable)

Wilo-Para Z BZ SC



## Technical data

Name	Para Z BZ15-130/7-50/SC	Para Z BZ25-180/7-50/SC
Connection input	G 1	G 1½
Connection output	G 1	G 1½
Port-to-port length <i>L0</i>	130 mm	180 mm
Dimensions <i>L1</i>	93 mm	
Dimensions <i>L2</i>	121 mm	127 mm
Dimensions <i>L3</i>	65 mm	90 mm
Gross weight, approx. <i>m</i>	1.7 kg	1.9 kg

## Flow and terminal box orientations

