



Non contractual pictures



Para Z BZ15-130/7-50/SC

The OEM Solution for sanitary applications.

Construction

Glandless circulation pump with either a bronze, a composite or a stainless steel pump housing and threaded connection. High-efficiency motor with automatic power adjustment and self-protecting modes.

Mechanical design dedicated to sanitary applications.

Type key

Example:	Para Z BZ15-130/7-50/SC-12
Para	Electronically controlled high-efficiency pump. Pump range adapted to requirements of the OEM market.
Z	Dedicated to sanitary applications
BZ	BZ = Inline bronze pump housing KU = Inline composite pump housing N = Inline stainless steel pump housing
15-130	Nominal diameter - Pump housing length
7-50	Nominal delivery head range [m] - Power consumption
SC	SC = self controlled pump ; $\Delta p-v$, $\Delta p-c$, constant speed I, II, III iPWM = the pump is controlled by an external system via iPWM signal
12	Position of electronic module

Your advantages

- A large range of specific pump housings with bronze, stainless steel or composites for the use in sanitary applications
- Easy installation thanks to a front access to the signal connector and screws
- High system protection due to integrated functionalities such as manual restart as well as reset to factory settings

Technical data (type)

Approved liquids (other liquids upon request)

Drinking water and water for food-processing companies in accordance with TrinkwV 2001 (Drinking water ordinance)	Yes
Min. fluid temperature T_{min}	3 °C
Max. fluid temperature T_{max}	85 °C
Min. ambient temperature T_{min}	-5.0 °C
Max. ambient temperature T_{max}	70.0 °C
Maximum operating pressure P_N	10 bar

Min. suction head (to avoid cavitation at suction port at water pumping temperature)

Minimum suction head at 50 °C m	0.5 m
Minimum suction head at 95 °C m	4.5 m

Motor data

Mains connection	1~230V +10/-15%, 50/60Hz
------------------	--------------------------

Pump operation in high ambient / fluid temperature may affect hydraulic performance. For further information please contact Wilo.

Technical data (type)

Approvals and markings	CE / Drinking water ordinance : compliant / EAC / UA
Insulation class	F
Motor protection	integrated
Power consumption $P_{1 min}$	6 W
Power consumption $P_{1 max}$	50 W
Max current I_{max}	0.44 A
Protection class	IPX4D
Power consumption in standby mode P_1	≤ 0.5 W

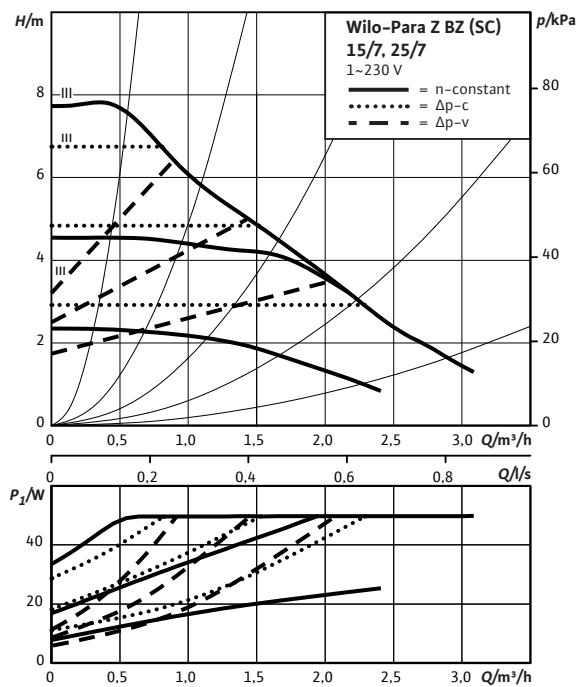
Materials

Pump housing	Bronze
Impeller	PPO-GF30
Shaft	Stainless steel
Bearing	Carbon

Pump operation in high ambient / fluid temperature may affect hydraulic performance. For further information please contact Wilo.

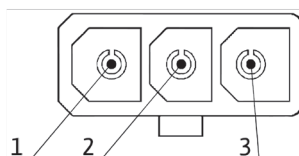
Pump curve

Wilo-Para Z BZ 15/7, 25/7



Connector diagram

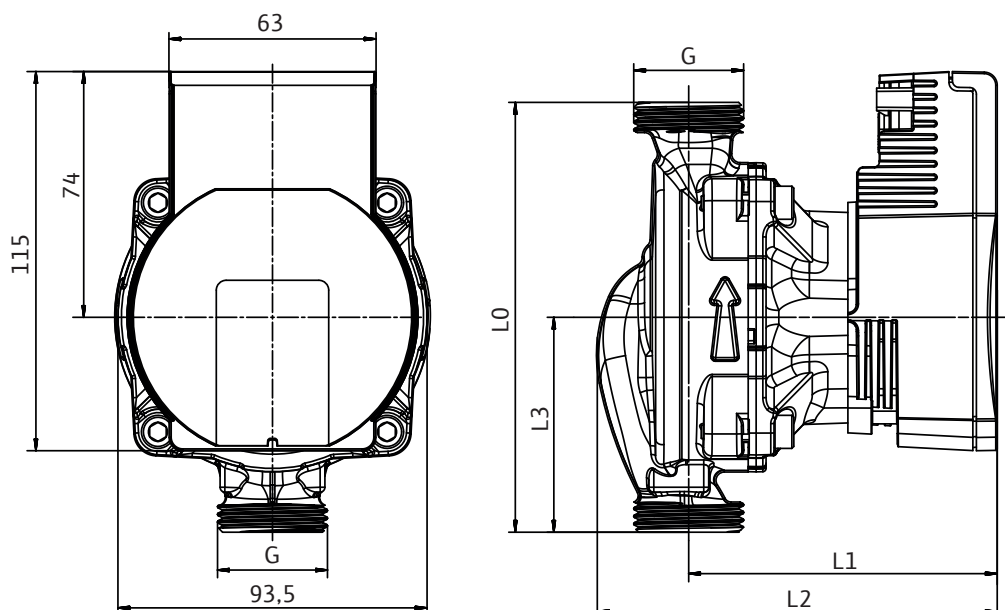
Power - Integrated 3-way connector type Molex 5025-03 for plug Facon PR60 or equivalent



1. L
2. Neutral
3. PE

Dimension drawing (variable)

Wilo-Para Z BZ SC



Technical data

Name	Para Z BZ15-130/7-50/SC	Para Z BZ25-180/7-50/SC
Connection input	G 1	G 1½
Connection output	G 1	G 1½
Port-to-port length <i>L0</i>	130 mm	180 mm
Dimensions <i>L1</i>	93 mm	
Dimensions <i>L2</i>	121 mm	127 mm
Dimensions <i>L3</i>	65 mm	90 mm
Gross weight, approx. <i>m</i>	1.7 kg	1.9 kg

Flow and terminal box orientations

