

Tender specification:

Brass distributor/collector “Multidis SFI” for industrial surface heating and cooling systems, item no. 14144...., with ball valves in the flow distributor and regulating valves in the return collector, pre-assembled, five different distributor/collector modules with two up to six heating circuit connections, extension to a maximum of 20 circuits by connecting the distributor/collector modules.

Brass flow distributor
with integrated ball valves, G 1 male threaded connection for Oventrop compression fittings with collar nut, G ½ blind plug for the subsequent connection of an “Optiflex” ball valve.
Flow distributor one port G 2 collar nut for the direct connection of a flat sealing ball valve or of an additional flow distributor module, one port G 2 male thread for mounting a cap or for the extension by an additional flow distributor module.

Brass return collector
with integrated regulating valves, G 1 male threaded connection for Oventrop compression fittings with collar nut, G ½ blind plug for the subsequent connection of an “Optiflex” ball valve.
Return collector one port G 2 collar nut for the direct connection of a flat sealing ball valve or of an additional return collector module, one port G 2 male thread for mounting a cap or for the extension by an additional return collector module.

Technical data:

Max. operating temperature t_s : 90 °C
Max. operating pressure p_s : 6 bar
Max. differential pressure: 1 bar
 k_{vs} value: 2.4 m³/h

Models:

for 2 circuits
for 3 circuits
for 4 circuits
for 5 circuits
for 6 circuits

Item no.:

1414452
1414453
1414454
1414455
1414456

Application:

The Oventrop brass distributors/collectors are designed for the central distribution of heating or cooling water to the different circuits of an industrial surface heating/cooling system.

Five different distributor/collector modules with two up to six heating circuit connections can be combined individually up to a maximum of 20 circuits. The connection of the individual modules is flat sealing.

The supply and return pipe are connected on the left hand side of the distributor/collector.

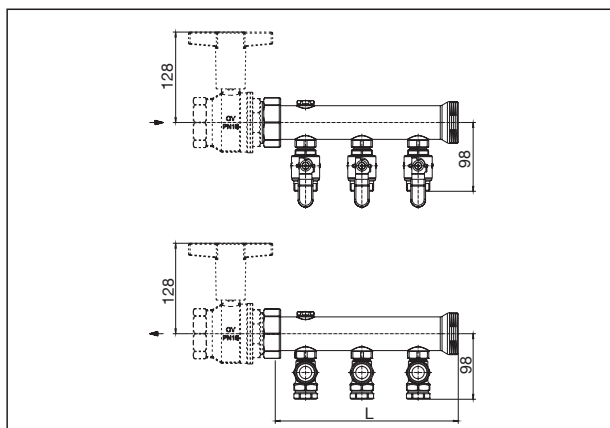
Accessories:

The following system components are available as accessories (see also illustration “Summary with system components” on page 2):

- Console (item no. 1414490): For fixing the brass distributor/collector “Multidis SFI” (dimensions see illustration “Dimensions console” on the right hand side)
- Cap G 2 female thread (item no. 1414493): For closing the ends of the distributor/collector
- Ball valve DN 50 (item no. 1406586): For the isolation of the flow distributors and return collectors
- Ball valve “Optiflex” (item no 1033314): For filling and bleeding
- Compression fittings “Cofit S” 20 x 2 mm x G 1 collar nut (item no. 1507969) and 26 x 3 mm x G 1 collar nut (item no. 1507979): For the connection of the PE-Xc plastic pipes “Copex”

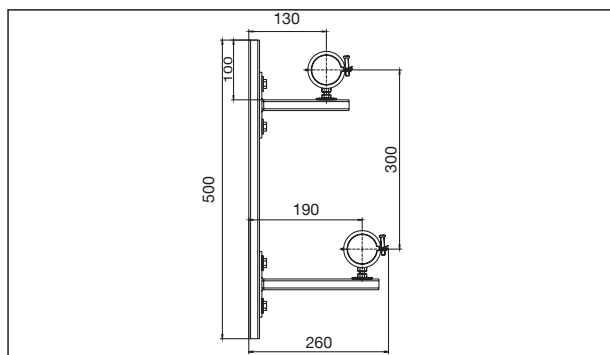


“Multidis SFI”



Item no.:	Outlets	Length (L)	Length with ball valves 1406586
1414452	2	180 mm	300 mm
1414453	3	260 mm	380 mm
1414454	4	340 mm	460 mm
1414455	5	420 mm	540 mm
1414456	6	500 mm	620 mm

Dimensions



Dimensions console

“Multidis SFI” Brass distributor/collector for industrial surface heating and cooling systems

Function:

The brass distributors/collectors “Multidis SFI” are used for the connection of surface heating/cooling circuits in industrial surface heating and cooling systems.

It is recommended to equip the distributor/collector with ball valves DN 50 (item no. 1406586). They enable the isolation of the supply and return pipe, for instance for maintenance work. The flow distributor of the brass distributor/collector “Multidis SFI” is equipped with ball valves. Hydronic balancing is carried out with the help of the regulating valves integrated in the return collector.

When choosing the operating fluid, the latest technical status has to be considered (e.g. VDI 2035 - Avoidance of damage to hot water systems).

Installation:

(see also below illustration “System components”)

The flow distributor and return collector are pre-assembled and leak tested at works. The individual distributor/collector modules are installed with the help of the collar nut (G 2 female thread with flat seal). The flow distributor (at the top) and the return collector (at the bottom) are installed in the console (accessory: item no. 1414490).

The ends of the distributor/collector are closed with the G 2 female threaded cap (accessory: item no. 1414493).

The ball valve DN 50 (accessory: item no. 1406586) is installed with the help of the collar nut (G 2 female thread with flat seal). The risers are, for instance, connected to the female threads of the ball valves with the Oventrop “Combi-System”:

- Composition pipe “Copepe”
- Press fittings “Cofit P”

Regarding thermal and sound insulation, the pipework has to be insulated according to the valid standards, regulations and approved rules of technology.

The surface heating/cooling circuits are connected to the G 1 compression connections at the flow distributor and return collector of the brass distributor/collector “Multidis SFI”.

Advantages:

- all components from one supplier
- individual combination of the different distributor/collector modules
- hydronic balancing as well as the isolation of the heating circuits can be carried out at the distributor/collector
- good hydronic values
- robust distributor/collector modules made of brass
- robust console including pipe clamps with sound insulation
- the Oventrop “Combi-System” with the composition pipe “Copepe”, press fittings “Cofit P” and screwed fittings “Cofit S” allows for a fast and safe connection of the distributor/collector to the risers
- the Oventrop programme includes composition pipes “Copepe”, PE-Xc pipes “Copex” as well as suitable connection fittings for surface heating and cooling circuits

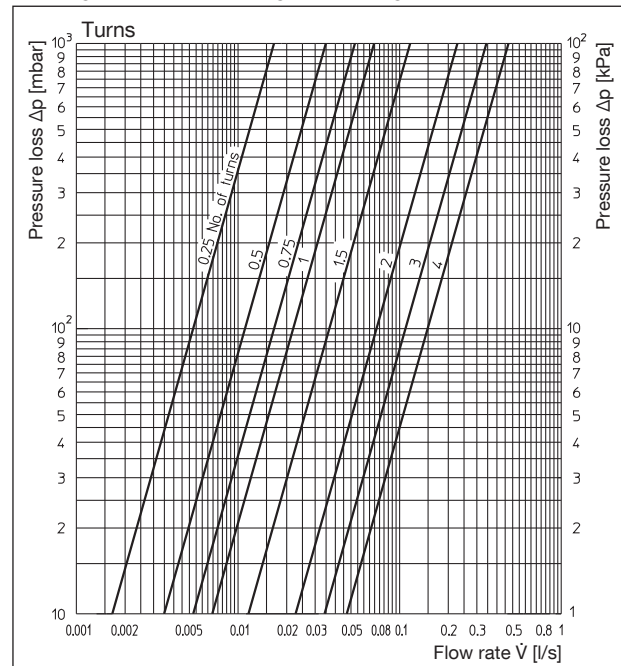
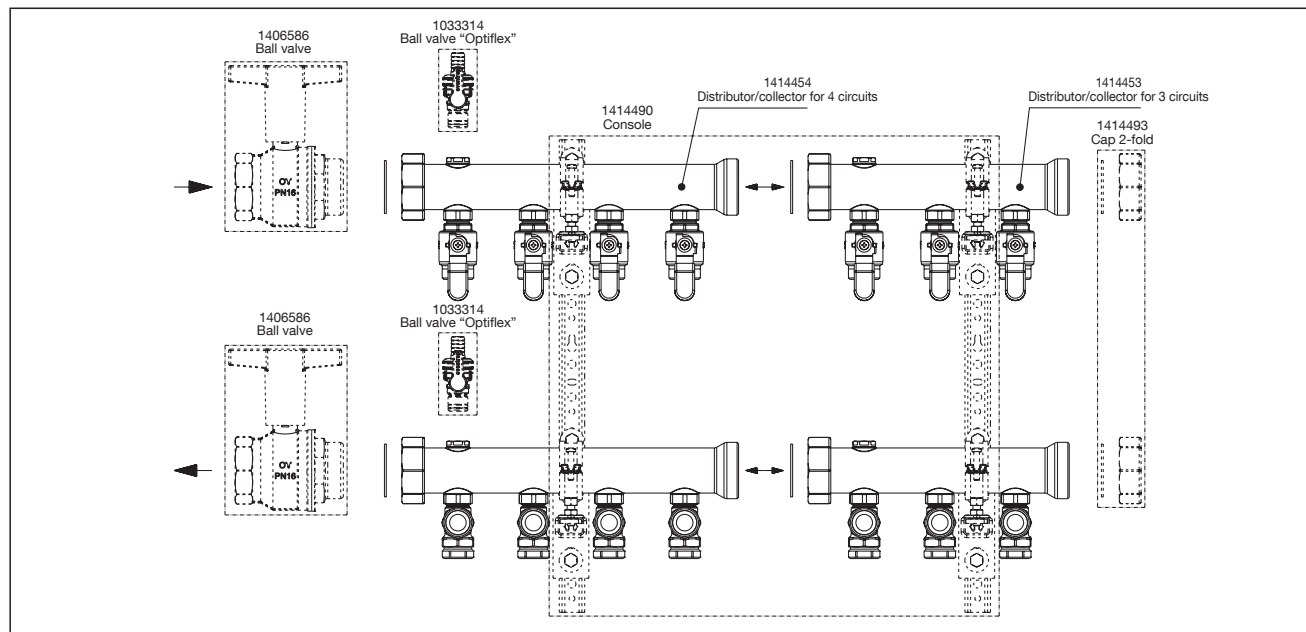


Chart for brass distributor/collector “Multidis SFI”, item no. 14144..., regulating insert for different presetting values



Summary with system components

Subject to technical modifications without notice.

Product range 2
ti 270-EN/10/MW
Edition 2017